

Service Manual

SERVICE PARTS & DIAGRAMS

BENDPAK

PL-7000XR

PRODUCT SKU
5175454

DRAWING Nº
5260185

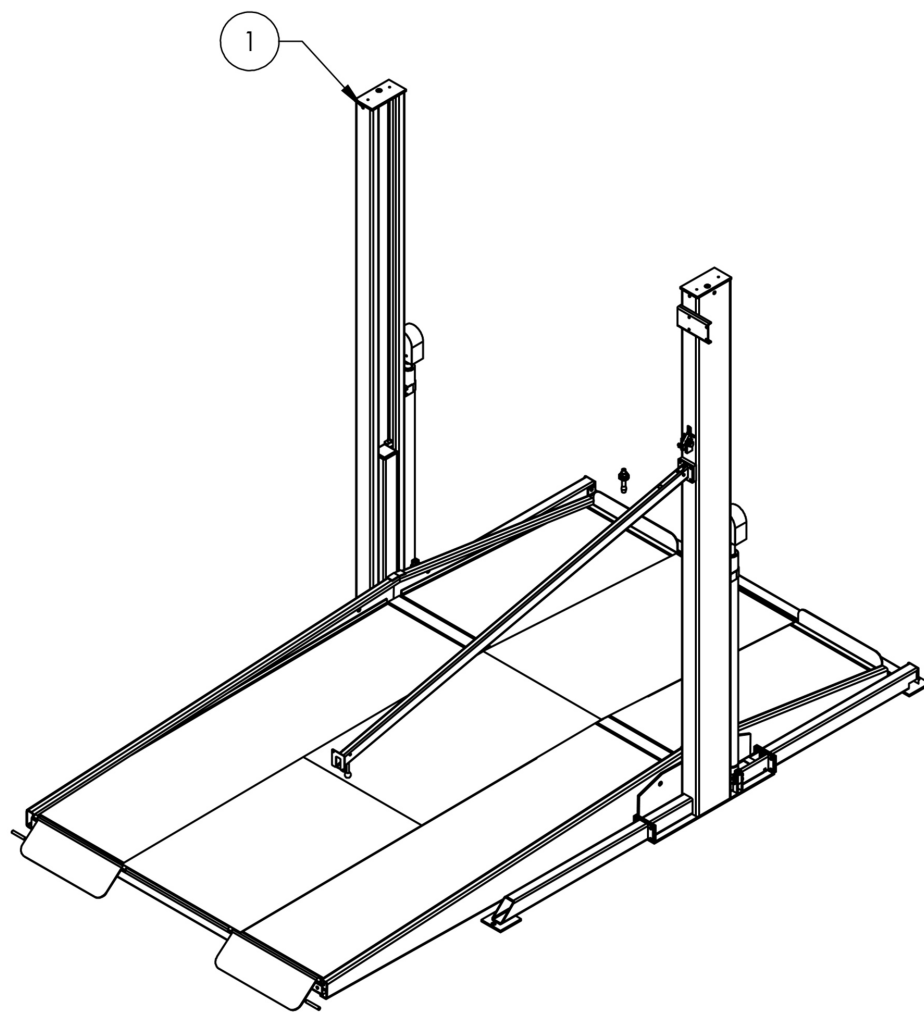
CATEGORY
Parking Lift

REV
Version R

DATE
12.09.2022

BendPak.

This guide is a troubleshooting reference used for maintaining and servicing your Bend Pak product. It provides comprehensive information on identifying serviceable parts and components and assists in troubleshooting problems and performing assembly /disassembly procedures.



BendPak, Inc. Corporate Office
1645 Lemonwood Drive
Santa Paula, CA 93060 USA
Toll Free US/Canada: 1-800-253-2363
Fax: 1-805-933-9160
info@bendpak.com

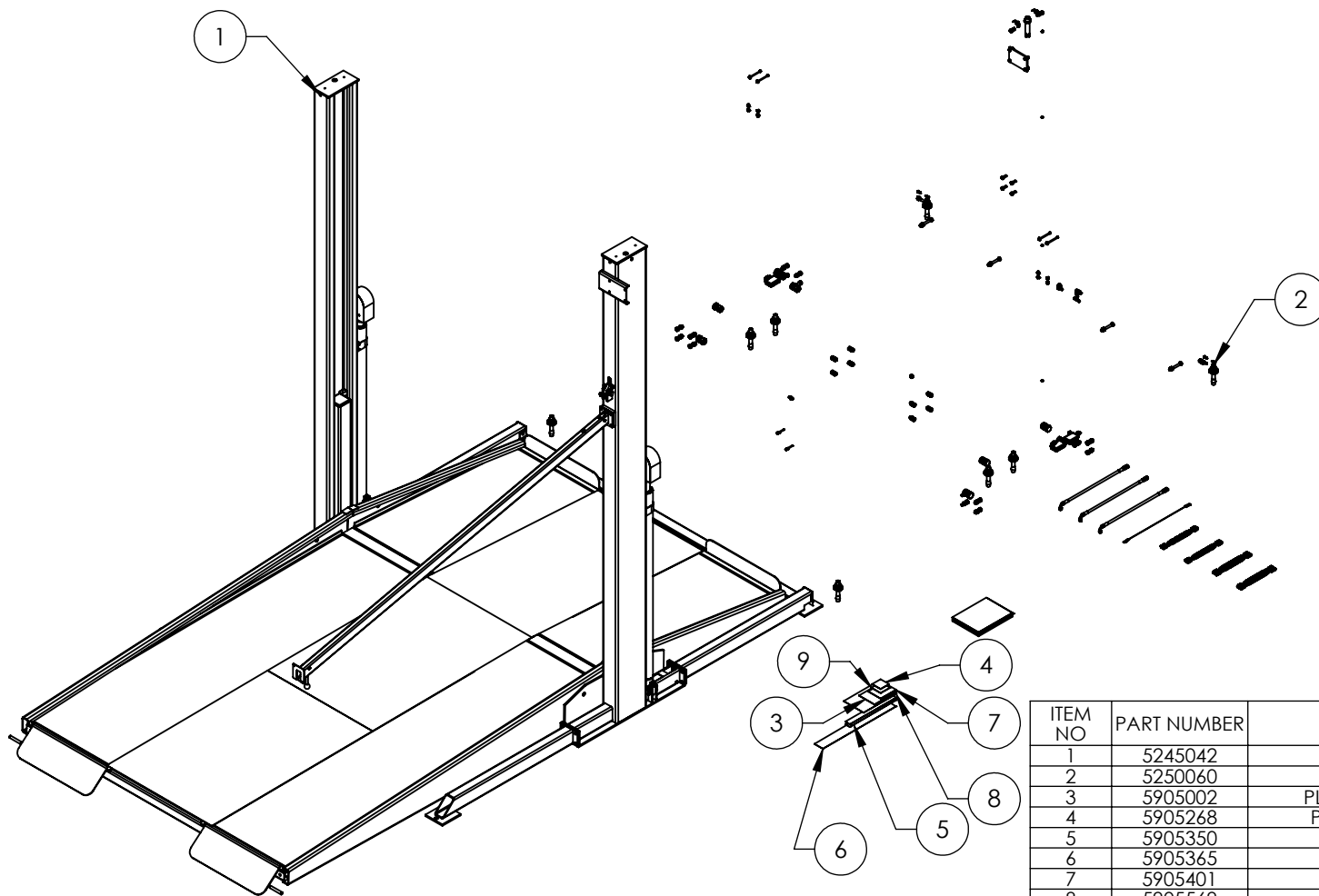
Customer Service Desk / Warranty
Customer Service Representatives
Office Tel: 1-805-933-9970
Toll Free US/Canada: 1-800-253-2363
Fax: 1-805-933-9160
customerservice@bendpak.com

Parts Orders
Customer Service Representatives
Office Tel: 1-805-933-9970
Toll Free US/Canada: 1-800-253-2363
Fax: 1-805-933-9160
parts@bendpak.com

Domestic Sales & Service
USA Sales Representatives
Office Tel: 1-805-933-9970
Toll Free US/Canada: 1-800-253-2363
Fax: 1-805-933-9160
sales@bendpak.com

International Sales & Service
Office Tel: 1-805-933-9970
Exports Dept: 1-805-933-9970 EXT. 192
Ext. Toll Free US/Canada: 1-800-253-2363
Fax: 1-805-933-9160
bpkexports@bendpak.com

REVISION				
REV	DESCRIPTION	DATE	EDITED BY	ECO#
P	WAS 2489 NOW 2498, REPLACED 5905630 WITH 5905340 UPDATED BOM REVISION	01/15/2018	TS	00918
Q	UPDATED BOM REVISIONS	06/14/2018	TM	00961
R	REPLACED (2) 5905340 WITH 5905350, REMOVED (1) 5905340	07/15/2019	CA	01101



ITEM NO	PART NUMBER	DESCRIPTION	QTY	REV
1	5245042	PL-7000XR LIFT SUPERSTRUCTURE	1	P
2	5250060	PL-7000XR PARTS BOX	1	H
3	5905002	PL-7000 SERIES DECK WARNING LABEL	1	--
4	5905268	PL-7000 SERIES CONTROL BOX LABEL	1	--
5	5905350	WARNING PINCH POINTS SMALL	2	--
6	5905365	PL-7000 BP VERTICAL LABEL	1	--
7	5905401	MAX CAP DANGER 7K	1	--
8	5905569	PL-7000 SERIES SAFETY PLACARD	1	--
9	5905951	2017 SERIAL TAG-B-5905951-VERTICAL-NO BLEED	1	--

DO NOT SCALE DRAWING

DIMENSIONS ARE IN MM
TOLERANCES: MACHINE TO
0 = ± 1.5
0.0 = ± 0.5
0.00 = ± 0.13
ANGULAR: MACHINE TO
0 = $\pm 1/2^\circ$
SURFACE FINISH 1.6 Ra μ m
FOR MACHINED SURFACES
UNLESS OTHERWISE SPECIFIED

NAME	DATE
DRAWN TM	06/02/2011
CHECKED --	--
THIRD ANGLE PROJECTION	

PROPRIETARY AND CONFIDENTIAL
THE INFORMATION CONTAINED IN THIS DRAWING IS
THE SOLE PROPERTY OF BENDPAK INC. ANY
REPRODUCTION IN PART OR AS A WHOLE WITHOUT
THE WRITTEN PERMISSION OF BENDPAK INC. IS
PROHIBITED.

BendPak.

1645 LEMONWOOD DR.
SANTA PAULA, CA 93060

TITLE: PL-7000XR
PRODUCTION LIFT VER A

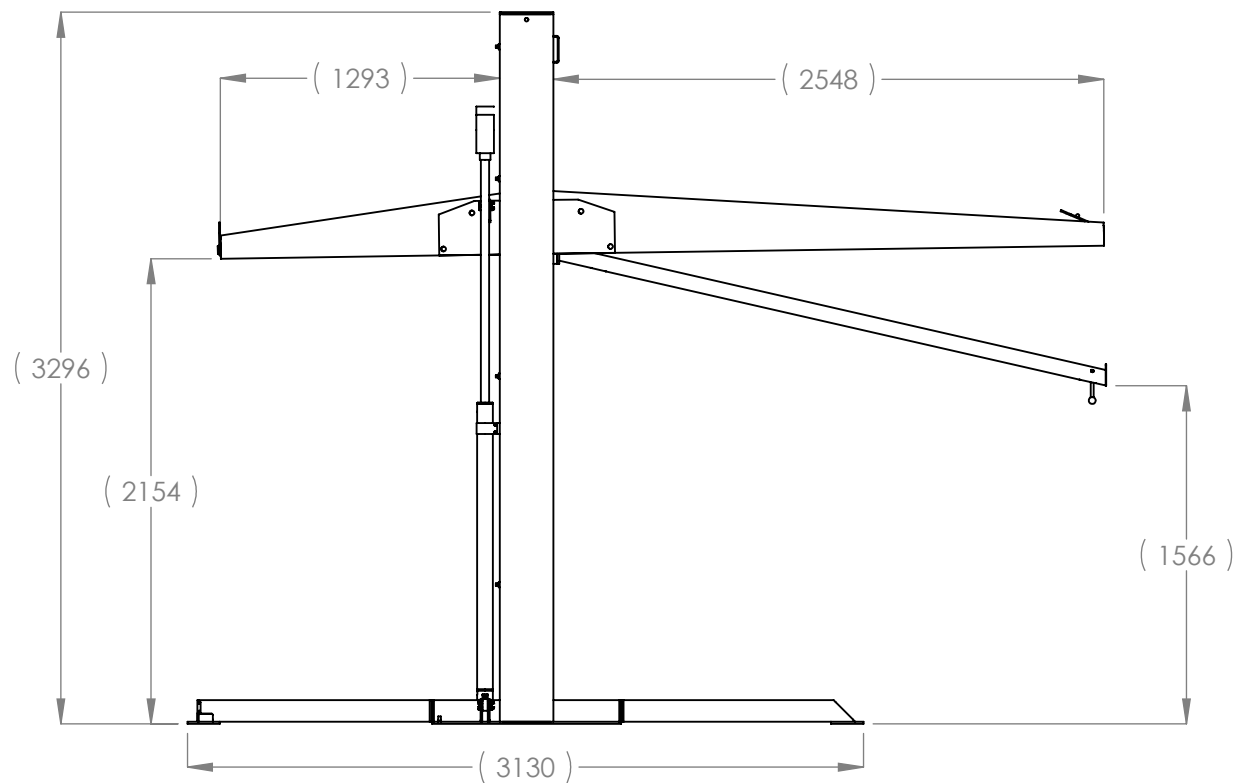
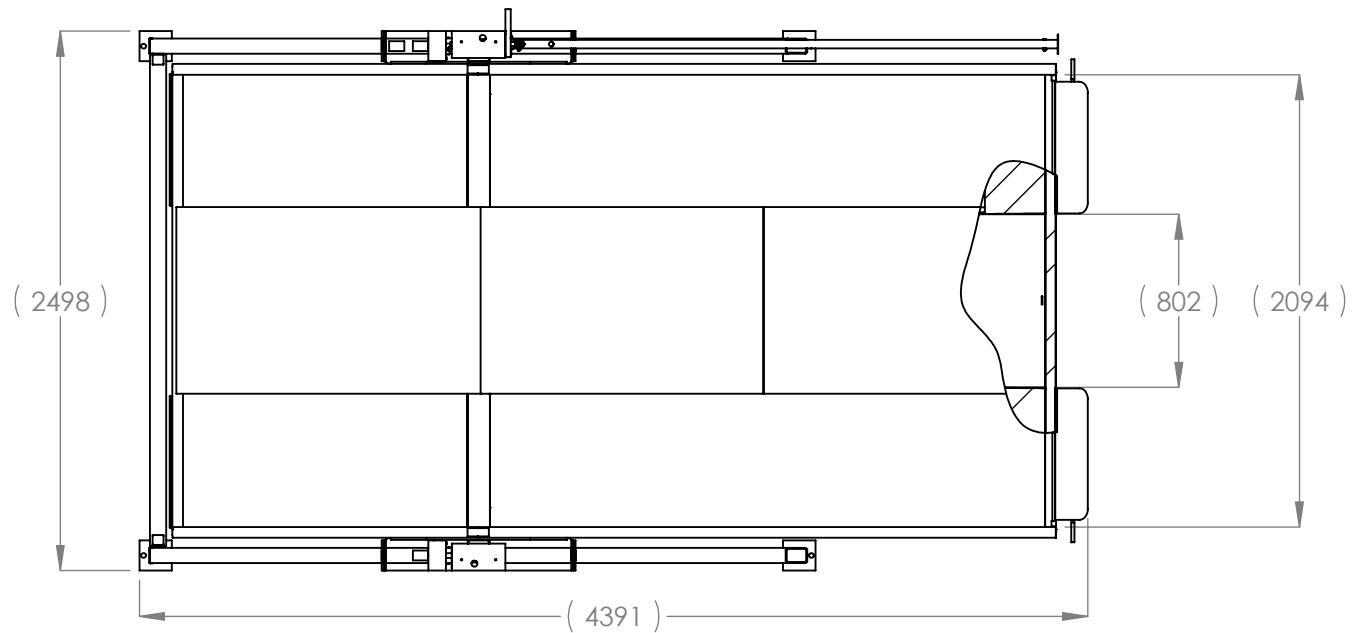
SIZE	DWG. NO.	REV
A	5260185	R

SCALE: 1:35

SHEET 1 OF 2

NOTE: UNLESS OTHERWISE SPECIFIED.

1. SEE SHIPPING INSTRUCTIONS FOR FINAL PACKAGING



BP BendPak.

1645 LEMONWOOD DR.
SANTA PAULA, CA 93060

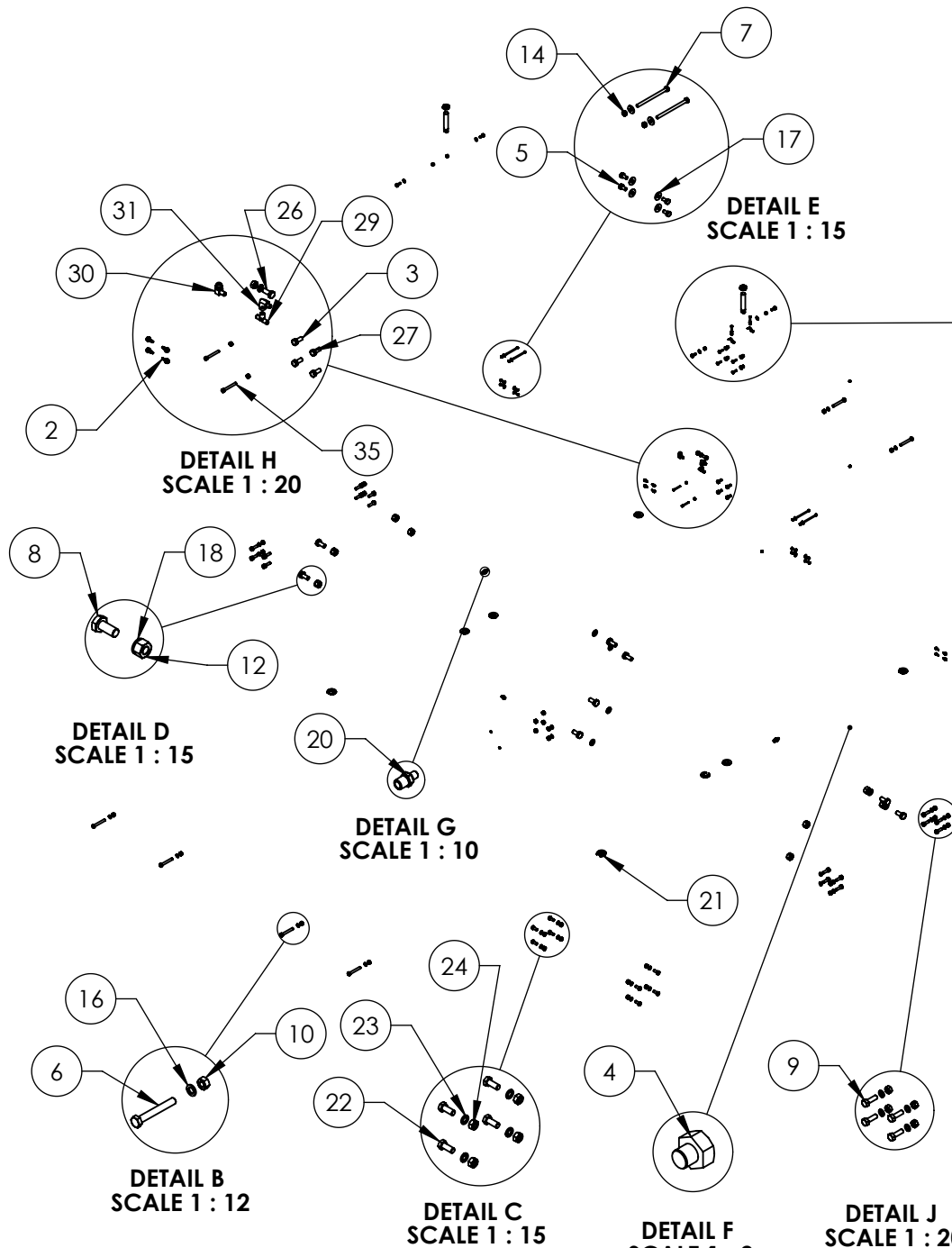
TITLE: PL-7000XR
PRODUCTION LIFT VER A

SIZE	DWG. NO.	REV
A	5260185	R

SCALE: 1:35

SHEET 2 OF 2

REVISION		DATE	EDITED BY	ECO#
REV	DESCRIPTION			
E	ADDED (20) 5545535	03/18/2010	TM	00342
E-001	UPDATED NEXT ASSEMBLIES	03/10/2011	TM	00441
E-002	UPDATED NEXT ASSEMBLIES	06/01/2011	TM	00448
F	REPLACED (8)5535012 WITH 5535041, (8)5545201, WITH 5545061, (8)5530152 WITH 5530563	12/23/2014	MR	00679
G	UPDATED BOM REVISION	01/31/2017	DB	00807



ITEM NO	PART NUMBER	DESCRIPTION	QTY	REV
1	5746024	PL-7000 SERIES ADJUSTABLE CHAIN CONNECTOR	2	C
2	5530749	STS M6 x 1.0 x 10	8	-
3	5530738	HHB M10 x 1.5 x 25	8	-
4	5530153	HHB M6 x 1.0 x 5	4	-
5	5530031	HHB M6 x 1 x 12	8	-
6	5530009	HHB M12 x 1.75 x 90 CL8.8	8	-
7	5530037	HHB M6 x 1 x 90	4	-
8	5530154	HHB M20 x 2.5 x 45	8	-
9	5530116	HHB M12 x 1.75 x 40	16	-
10	5535012	NUT M12 x 1.75 NL	26	-
11	5535013	NUT M10 x 1.5 NL	4	-
12	5535017	NUT M20 x 2.5 NL	8	-
13	5535018	NUT M24 x 2.0 NL	2	-
14	5535357	NUT M6 x 1.0 NL	9	-
15	5545005	M6 FLAT WASHER	4	-
16	5545201	WASHER M12 SPRING LOCK	26	-
17	5545339	WASHER 6mm x 18mm	13	-
18	5545343	WASHER M20 FLAT	8	-
19	5545341	WASHER M10 x Ø20 FLAT	4	-
20	5550100	FTG NPTL -04 JIC x -06 NPT	2	-
21	5545535	C WASHER SHIM FOR LIFTS	20	-
22	5530563	HHB M12 x 1.75 x 30 CL10.9	8	-
23	5545061	WASHER M12 x 21.1 SL CL10.9	8	-
24	5535041	NUT M12 x 1.75 NL CL10.9	8	-
25	5530756	HHB M6 x 1 x 25	3	-
26	5530152	HHB M12 x 1.75 x 30mm	2	-
27	5545251	WASHER M10 x 18mm SL	4	-
28	5505026	1/2" PIPE STRAP Ø20.6mm	2	-
29	5550181	FTG TEE -04 JIC x -04 JIC x 04 NPT	1	-
30	5550103	FTG FLB -04 JIC -06 ORB	1	-
31	5550153	FTG FLB -04 NPT F x -04 JIC	1	-
32	5545021	WASHER M8 x Ø20 FLAT	4	-
33	5530010	HHB M8 x 1.25 x 25	4	-
34	5535001	NUT M8 x 1.25 NL	4	-
35	5530159	SHCS M6 x 1.0 x 50	2	-

DO NOT SCALE DRAWING

NAME DATE

DRAWN GJZ 12/17/2008

CHECKED DB 2/3/2017

DIMENSIONS ARE IN MM

THIRD ANGLE PROJECTION



PROPRIETARY AND CONFIDENTIAL
THE INFORMATION CONTAINED IN THIS DRAWING IS
THE SOLE PROPERTY OF BENDPAK INC. ANY
REPRODUCTION IN PART OR AS A WHOLE WITHOUT
THE WRITTEN PERMISSION OF BENDPAK INC. IS
PROHIBITED.

BP BendPak.

1645 LEMONWOOD DR.
SANTA PAULA, CA 93060

TITLE:
PARTS BAG PL-7000 SERIES

SIZE DWG. NO. REV
A 5174015 G

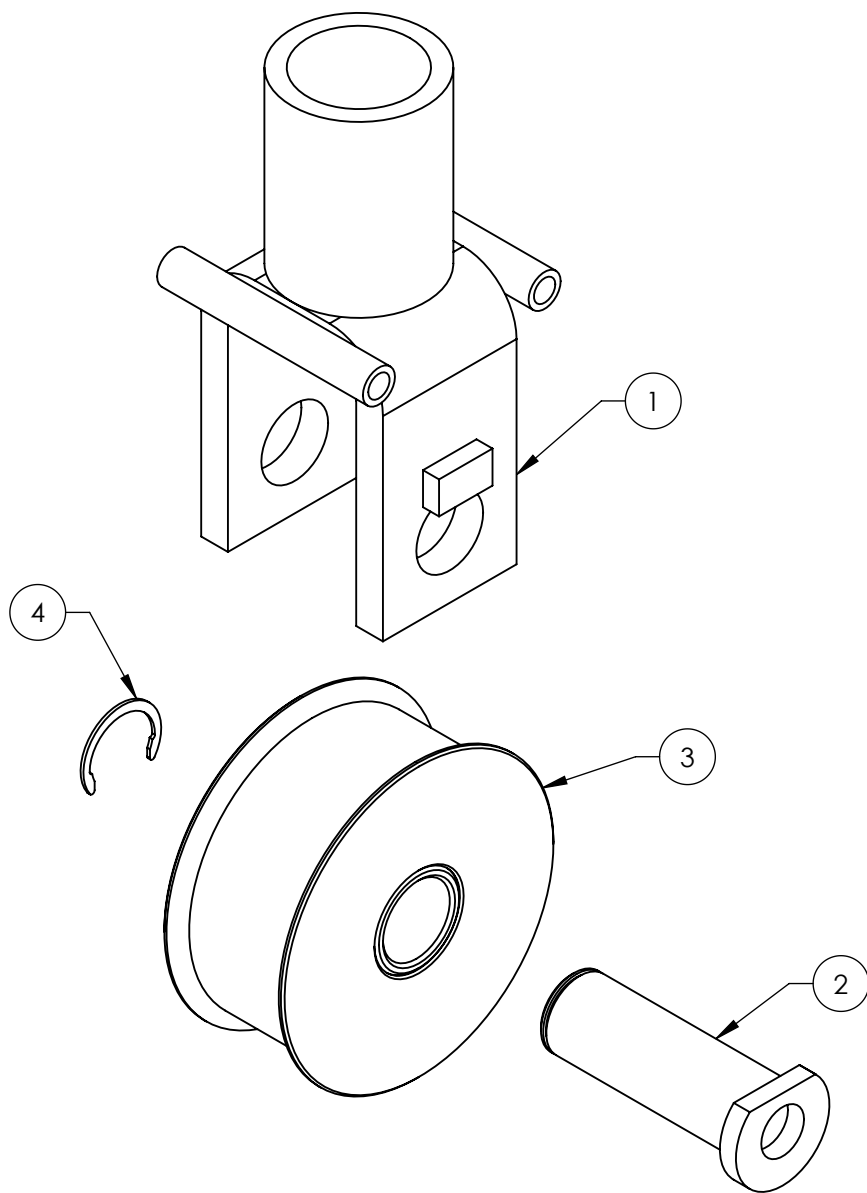
SCALE: 1:40 SHEET 1 OF 1

NOTE: UNLESS OTHERWISE SPECIFIED.



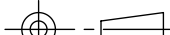
1. SEE SHIPPING INSTRUCTIONS FOR FINAL PACKAGING

NEXT ASSEMBLY
5250060

REVISION				
REV	DESCRIPTION	DATE	EDITED BY	ECO#
F	UPDATED BOM REVISIONS	02/14/2012	TM	00490
G	UPDATED BOM REVISION	06/25/2013	TM	00605
G-001	UPDATED NEXT ASSEMBLIES	06/07/2017	TM	00831
H	UPDATED BOM REVISIONS	03/08/2018	CA	00929



ITEM NO.	PART NUMBER	DESCRIPTION	QTY.	REV
1	5600081	PL-7000 SERIES ROLLER HOUSING WELDMENT	1	C
2	5600082	PL-7000XR/XPR-9S CHAIN ROLLER PIN WELDMENT	1	G
3	5215073	PL-7000XR/XPR-9 CHAIN ROLLER ASSEMBLY	1	H
4	5540006	SNAP RING TRUARC 5103-100	1	-

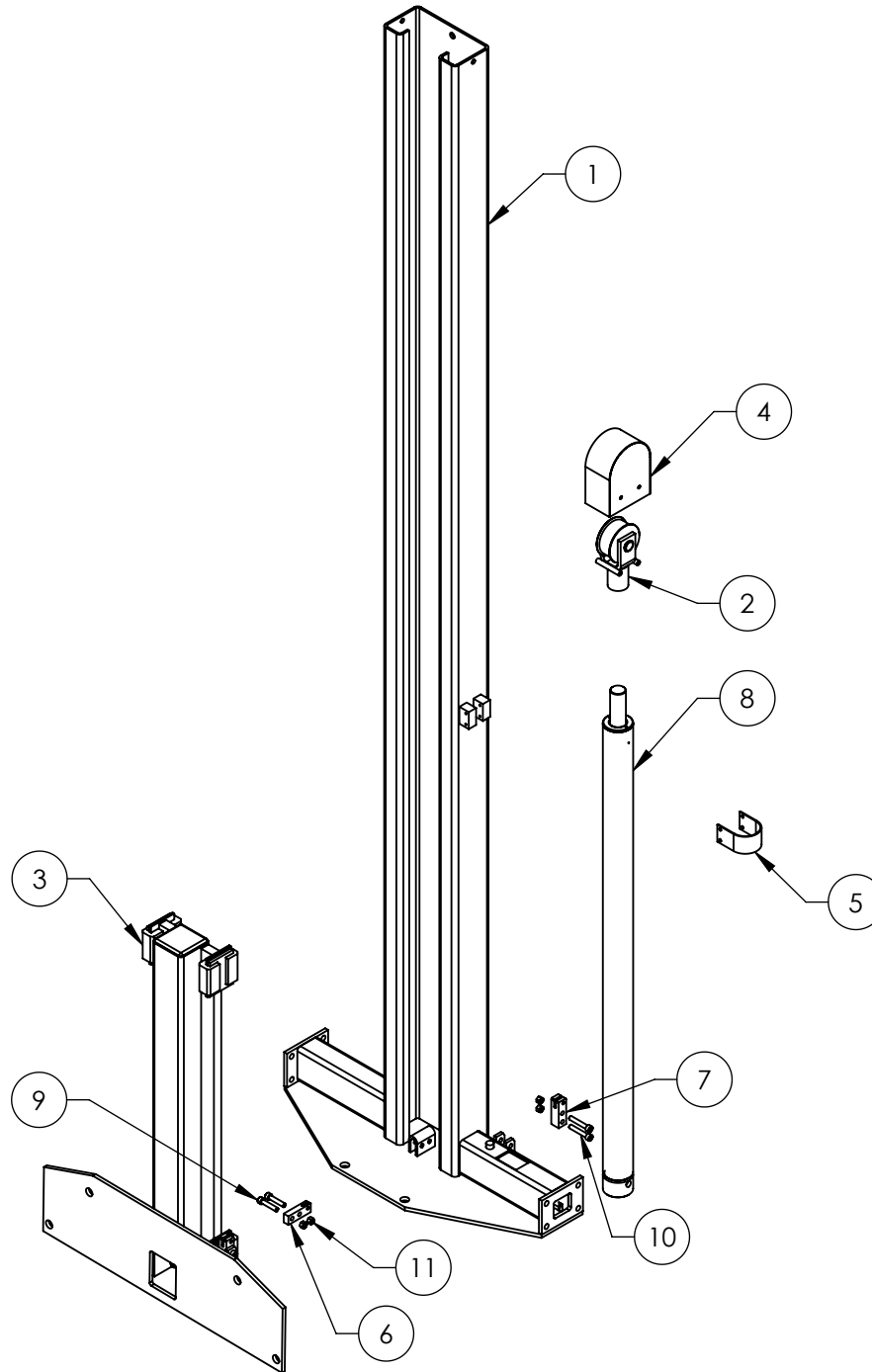
DO NOT SCALE DRAWING		NAME	DATE	<div> 1645 LEMONWOOD DR. SANTA PAULA, CA 93060</div>		
<div>DIMENSIONS ARE IN MM</div> <div></div>		DRAWN	AC	02/28/2008		
		CHECKED	CA	3/13/2018		
		THIRD ANGLE PROJECTION		TITLE: PL-7000 SERIES ROLLER ASSEMBLY		
<div></div>		<div>PROPRIETARY AND CONFIDENTIAL</div> <div>THE INFORMATION CONTAINED IN THIS DRAWING IS THE SOLE PROPERTY OF BENDPAK INC. ANY REPRODUCTION IN PART OR AS A WHOLE WITHOUT THE WRITTEN PERMISSION OF BENDPAK INC. IS PROHIBITED.</div>		SIZE	DWG. NO.	REV
				A	5215082	H
				SCALE: 1:2		SHEET 1 OF 1

NEXT ASSEMBLY
5215211
5215212
5215726
5215727

NOTE: UNLESS OTHERWISE SPECIFIED.

1. ASSEMBLE ITEMS AS SHOWN

REVISION				
REV	DESCRIPTION	DATE	EDITED BY	ECO#
T	UPDATED BOM REVISION	01/15/2018	TS	00918
U	UPDATED BOM REVISIONS	03/09/2018	CA	00929
V	UPDATED BOM REVISION	06/14/2018	TM	00961


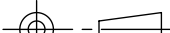


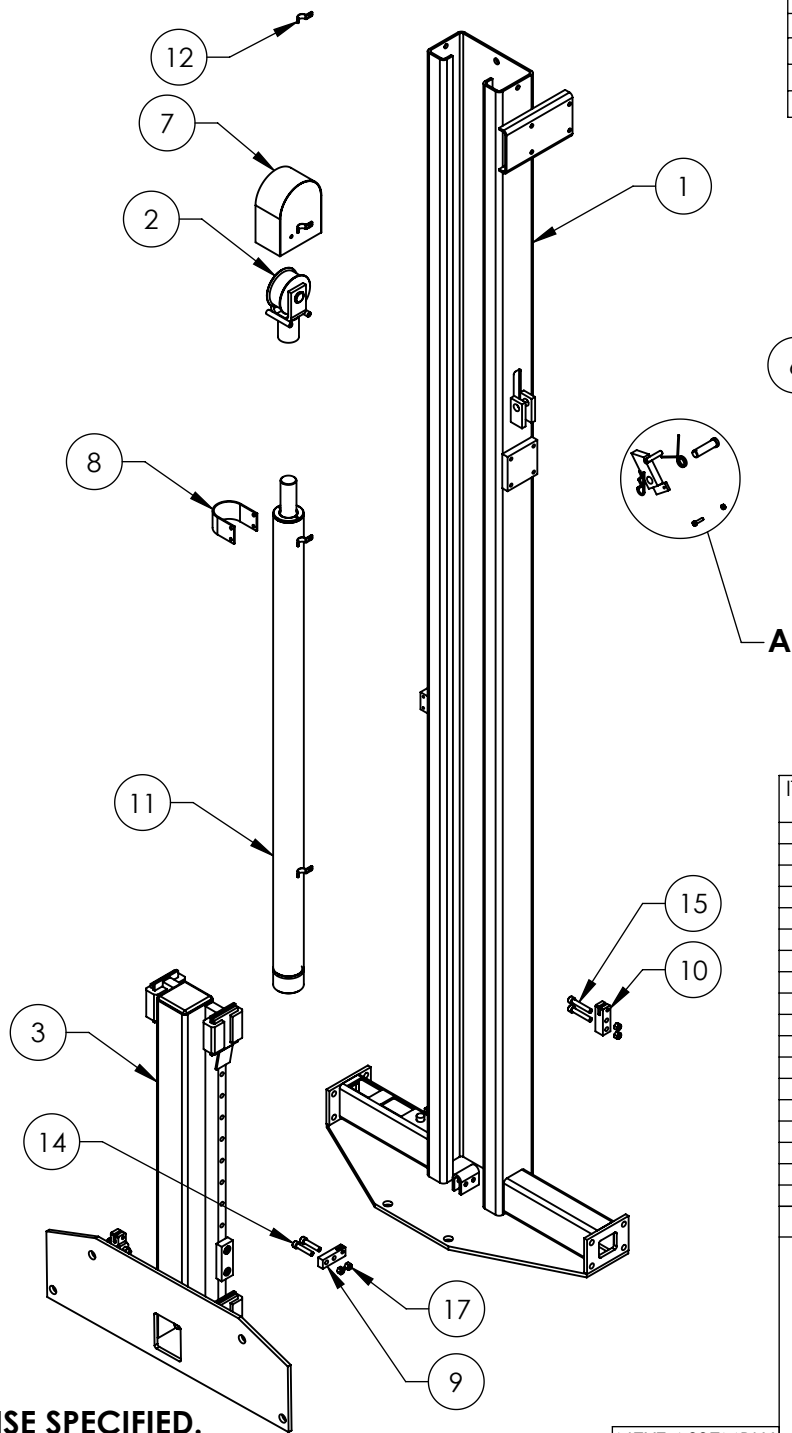
NOTE: UNLESS OTHERWISE SPECIFIED.

1. SEE SHIPPING INSTRUCTIONS FOR FINAL PACKAGING

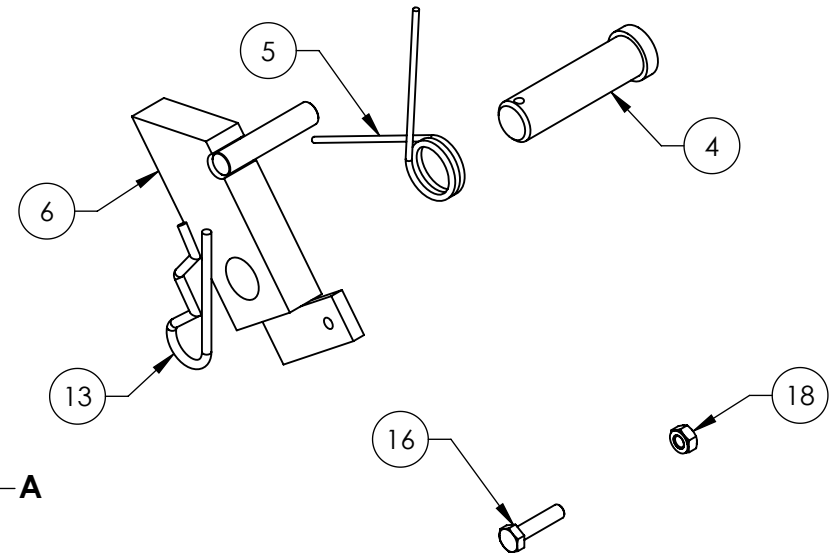
NEXT ASSEMBLY
5245042

ITEM NO	PART NUMBER	DESCRIPTION	QTY	REV
1	5600228	PL-7000XR OFFSIDE POST WELDMENT	1	G
2	5215082	PL-7000 SERIES ROLLER ASSEMBLY	1	H
3	5215325	PL-7000 SERIES LIFT HEAD ASSEMBLY - LH	1	M
4	5600111	ROLLER COVER WELDMENT	1	A
5	5700040	CYLINDER TIE STRAP	1	A
6	5736049	PL-7000 SERIES LIFT HEAD CONNECTOR	1	B
7	5761003	PL-7000, XPR-9S CHAIN CONNECTOR	1	H
8	5502325	CYLINDER ASSEMBLY Ø2.5 x 43	1	E
9	5530034	SHCS M10 x 1.5 x 50 GR8/CL10.9	2	-
10	5530039	SHCS M10 x 1.5 x 60 GR8/CL10.9	2	-
11	5535013	NUT M10 x 1.5 NL	4	-

DO NOT SCALE DRAWING		NAME	DATE	<div> BendPak.</div> <div>1645 LEMONWOOD DR. SANTA PAULA, CA 93060</div>		
DIMENSIONS ARE IN MM TOLERANCES: MACHINE TO 0 = ±1.5 0.0 = ±0.5 0.00 = ±0.13 ANGULAR: MACHINE TO 0 = ±1/2° SURFACE FINISH 1.6 Ra µm FOR MACHINED SURFACES UNLESS OTHERWISE SPECIFIED		DRAWN	GJZ			12/12/2008
		CHECKED	CA			6/22/2018
Y		THIRD ANGLE PROJECTION		TITLE:		
				PL-7000XR OFFSIDE POST ASSEMBLY		
				SIZE DWG. NO.		
		PROPRIETARY AND CONFIDENTIAL THE INFORMATION CONTAINED IN THIS DRAWING IS THE SOLE PROPERTY OF BENDPAK INC. ANY REPRODUCTION IN PART OR AS A WHOLE WITHOUT THE WRITTEN PERMISSION OF BENDPAK INC. IS PROHIBITED.		A 5215211		V
				SCALE: 1:18		SHEET 1 OF 1



REVISION				
REV	DESCRIPTION	DATE	EDITED BY	ECO#
V	UPDATED BOM REVISION	01/15/2018	TS	00918
W	UPDATED BOM REVISIONS	03/09/2018	CA	00929
X	UPDATED BOM REVISION	06/14/2018	TM	00961



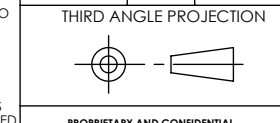
**DETAIL A
SCALE 1 : 3**

ITEM NO	PART NUMBER	DESCRIPTION	QTY	REV
1	5600229	PL-7000XR CONTROL POST WELDMENT	1	H
2	5215082	PL-7000 SERIES ROLLER ASSEMBLY	1	H
3	5215324	PL-7000 SERIES LIFT HEAD ASSEMBLY - RH	1	N
4	5505035	PL-7000 SERIES SAFETY CLEVIS PIN	1	B
5	5540001	2.5 WIRE DIA., Ø25.5x150 LG.	1	C
6	5620268	PL-7000 SAFETY LATCH WELDMENT	1	B
7	5600111	ROLLER COVER WELDMENT	1	A
8	5700040	CYLINDER TIE STRAP	1	A
9	5736049	PL-7000 SERIES LIFT HEAD CONNECTOR	1	B
10	5761003	PL-7000, XPR-9S CHAIN CONNECTOR	1	H
11	5502325	CYLINDER ASSEMBLY Ø2.5 x 43	1	E
12	5505026	1/2" PIPE STRAP Ø20.6mm	4	-
13	5505350	MODEL#211 HAIR PIN/ LARGE	1	-
14	5530034	SHCS M10 x 1.5 x 50 GR8/CL10.9	2	-
15	5530039	SHCS M10 x 1.5 x 60 GR8/CL10.9	2	-
16	5530756	HHB M6 x 1 x 25	1	-
17	5535013	NUT M10 x 1.5 NL	4	-
18	5535357	NUT M6 x 1.0 NL	1	-

DO NOT SCALE DRAWING

NAME	DATE
DRAWN GJZ	12/15/2008
CHECKED CA	6/22/2018

DIMENSIONS ARE IN MM
TOLERANCES: MACHINE TO
0 = ±1.5
0.0 = ±0.5
0.00 = ±0.13
ANGULAR: MACHINE TO
0 = ±1/2°
SURFACE FINISH 1.6 Ra µm
FOR MACHINED SURFACES
UNLESS OTHERWISE SPECIFIED



PROPRIETARY AND CONFIDENTIAL
THE INFORMATION CONTAINED IN THIS DRAWING IS
THE SOLE PROPERTY OF BENDPAK INC. ANY
REPRODUCTION IN PART OR AS A WHOLE WITHOUT
THE WRITTEN PERMISSION OF BENDPAK INC. IS
PROHIBITED.

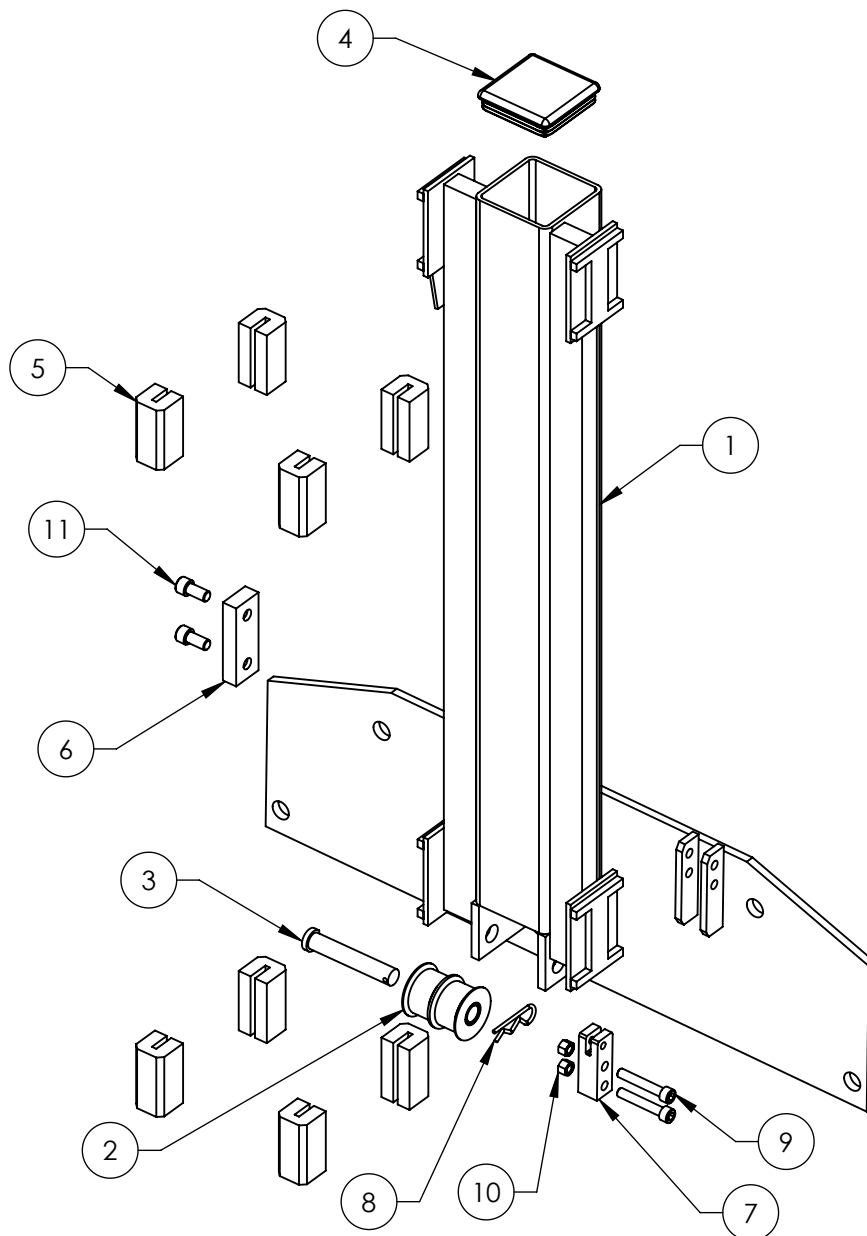
BendPak.
1645 LEMONWOOD DR.
SANTA PAULA, CA 93060

TITLE:	PL-7000XR CONTROL POST ASSEMBLY	
SIZE	DWG. NO.	REV
A	5215212	X
SCALE: 1:18		SHEET 1 OF 1

NOTE: UNLESS OTHERWISE SPECIFIED.

1. SEE SHIPPING INSTRUCTIONS FOR FINAL PACKAGING

NEXT ASSEMBLY
5245042



NOTE: UNLESS OTHERWISE SPECIFIED.

1. SEE SHIPPING INSTRUCTIONS FOR FINAL PACKAGING
2. ASSEMBLE ITEMS AS SHOWN

NEXT ASSEMBLY
5215212
5215726

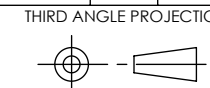
REVISION				
REV	DESCRIPTION	DATE	EDITED BY	ECO#
L	UPDATED BOM REVISION	04/14/2017	TS	00819
L-001	UPDATED NEXT ASSEMBLY	06/07/2017	TM	00831
M	UPDATED BOM REVISION	03/07/2018	CA	00929
N	UPDATED BOM REVISION	06/14/2018	TM	00961

ITEM NO	PART NUMBER	DESCRIPTION	QTY	REV
1	5600225	PL-7000 LIFT HEAD WELDMENT - RH	1	D
2	5215074	PL-7000 SERIES EQUALIZER ROLLER ASSEMBLY	1	C
3	5505682	PL-7000 SERIES CLEVIS PIN	1	B
4	5715005	PL-7000 SERIES POLYETHYLENE COVER BLOCK 95x95	1	D
5	5716001	PL-6000/7000, GP/XPR SERIES GUIDE BLOCK	8	F
6	5736051	PL-7000 SERIES SAFETY STOP BLOCK	1	B
7	5761003	PL-7000, XPR-9S CHAIN CONNECTOR	1	H
8	5505350	MODEL#211 HAIR PIN/ LARGE	1	-
9	5530039	SHCS M10 x 1.5 x 60 GR8/CL10.9	2	-
10	5535013	NUT M10 x 1.5 NL	2	-
11	5530033	SHCS M12 x 1.25 x 25mm NL	2	-

DO NOT SCALE DRAWING

NAME	DATE
DRAWN GJZ	12/08/2008
CHECKED CA	6/22/2018

DIMENSIONS ARE IN MM



PROPRIETARY AND CONFIDENTIAL
THE INFORMATION CONTAINED IN THIS DRAWING IS
THE SOLE PROPERTY OF BENDPAK INC. ANY
REPRODUCTION IN PART OR AS A WHOLE WITHOUT
THE WRITTEN PERMISSION OF BENDPAK INC. IS
PROHIBITED.

BendPak.

1645 LEMONWOOD DR.
SANTA PAULA, CA 93060

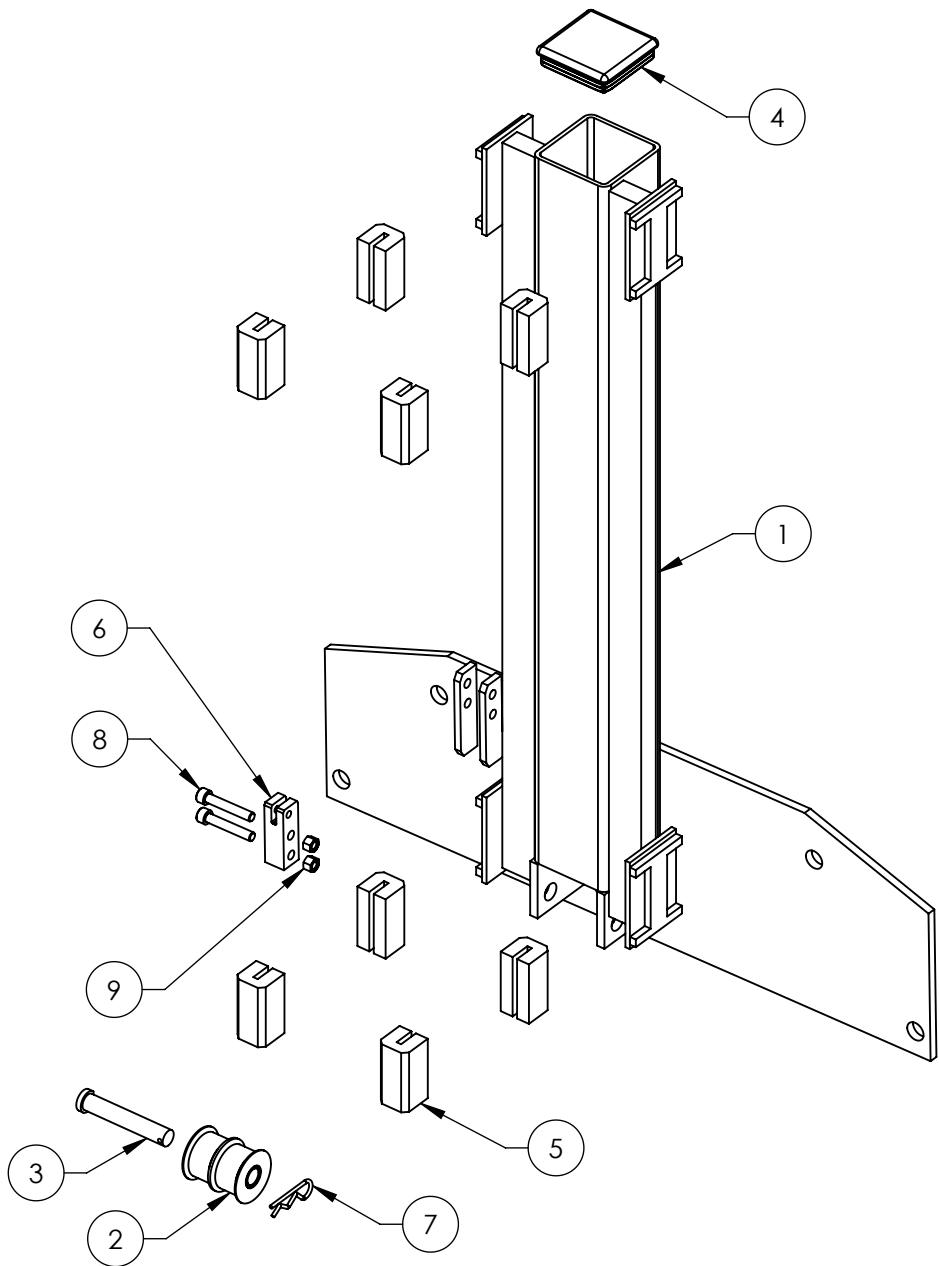
TITLE: PL-7000 SERIES LIFT
HEAD ASSEMBLY - RH

SIZE	DWG. NO.	REV
A	5215324	N

SCALE: 1:8

SHEET 1 OF 1

REVISION				
REV	DESCRIPTION	DATE	EDITED BY	ECO#
K	UPDATED BOM REVISION	04/14/2017	TS	00819
K-001	UPDATED NEXT ASSEMBLY	06/07/2017	TM	00831
L	UPDATED BOM REVISION	03/07/2018	CA	00929
M	UPDATED BOM REVISION	06/14/2018	TM	00961



NOTE: UNLESS OTHERWISE SPECIFIED.

- SEE SHIPPING INSTRUCTIONS FOR FINAL PACKAGING
- ASSEMBLE ITEMS AS SHOWN

NEXT ASSEMBLY
5215211
5215727

ITEM NO	PART NUMBER	DESCRIPTION	QTY	REV
1	5600226	PL-7000 LIFT HEAD WELDMENT - LH	1	C
2	5215074	PL-7000 SERIES EQUALIZER ROLLER ASSEMBLY	1	C
3	5505682	PL-7000 SERIES CLEVIS PIN	1	B
4	5715005	PL-7000 SERIES POLYETHYLENE COVER BLOCK 95x95	1	D
5	5716001	PL-6000/7000, GP/XPR SERIES GUIDE BLOCK	8	F
6	5761003	PL-7000, XPR-9S CHAIN CONNECTOR	1	H
7	5505350	MODEL#211 HAIR PIN/ LARGE	1	-
8	5530039	SHCS M10 x 1.5 x 60 GR8/CL10.9	2	-
9	5535013	NUT M10 x 1.5 NL	2	-

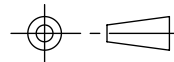
DO NOT SCALE DRAWING

DIMENSIONS ARE IN MM



NAME	DATE
DRAWN GJZ	12/08/2008
CHECKED CA	6/22/2018

THIRD ANGLE PROJECTION



PROPRIETARY AND CONFIDENTIAL
THE INFORMATION CONTAINED IN THIS DRAWING IS THE SOLE PROPERTY OF BENDPAK INC. ANY REPRODUCTION IN PART OR AS A WHOLE WITHOUT THE WRITTEN PERMISSION OF BENDPAK INC. IS PROHIBITED.

BendPak.

1645 LEMONWOOD DR.
SANTA PAULA, CA 93060

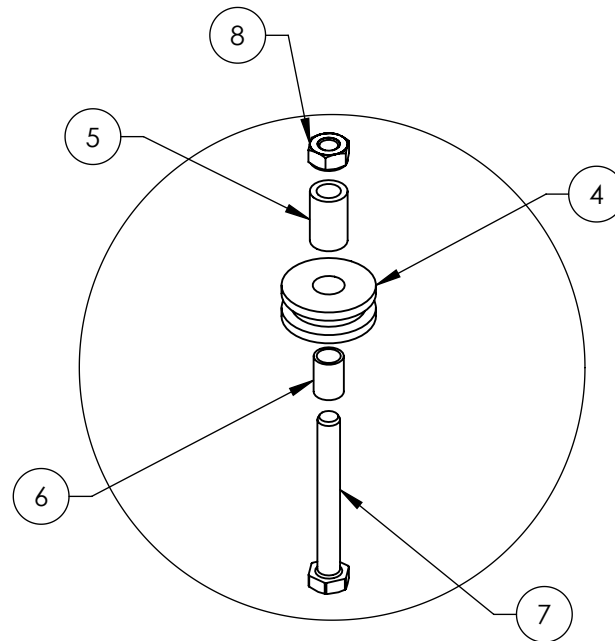
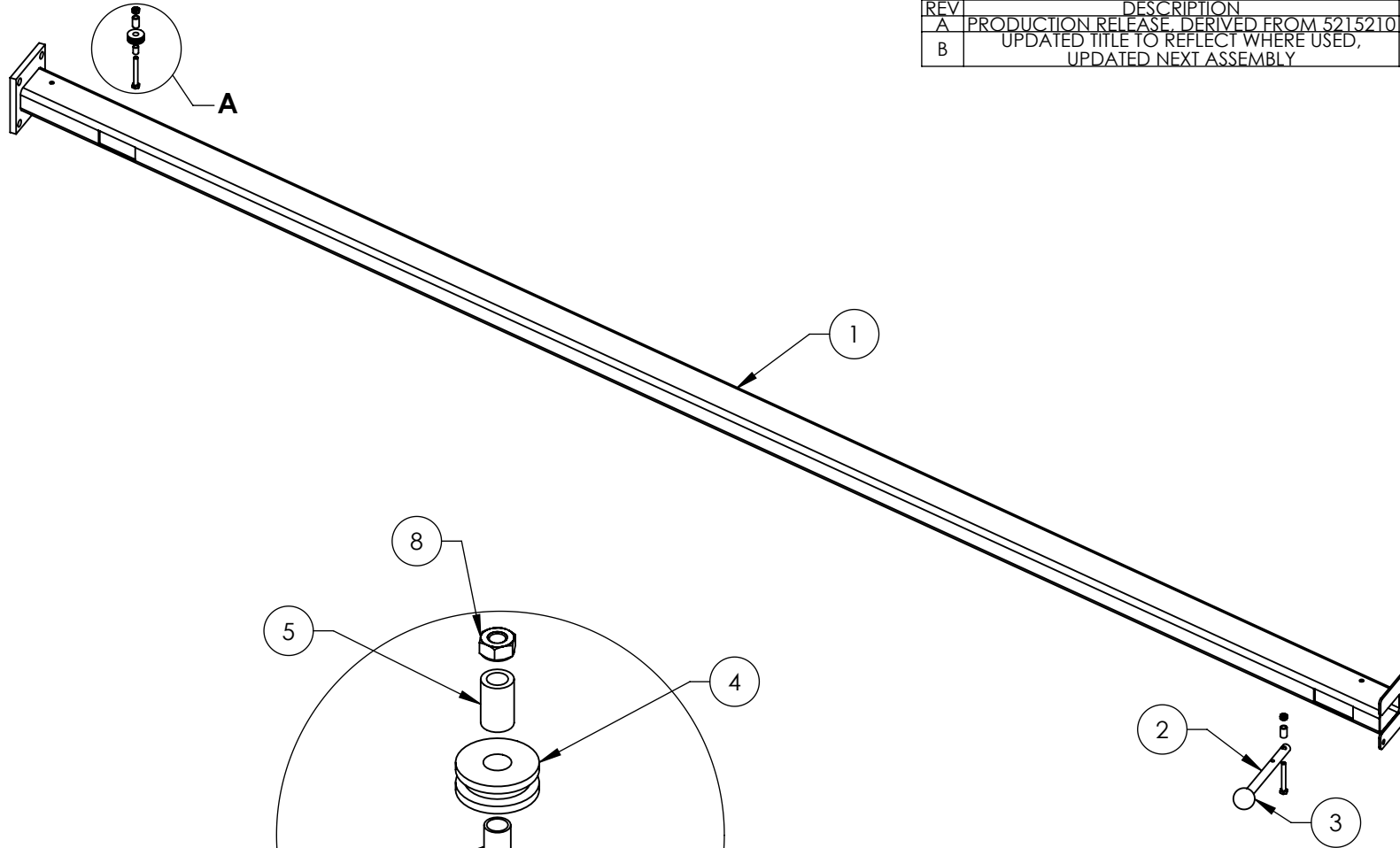
TITLE: PL-7000 SERIES LIFT HEAD ASSEMBLY - LH

SIZE	DWG. NO.	REV
A	5215325	M

SCALE: 1:8

SHEET 1 OF 1

REV	DESCRIPTION	REVISION	DATE	EDITED BY	ECO#
A	PRODUCTION RELEASE, DERIVED FROM 5215210		03/10/2011	TM	00441
B	UPDATED TITLE TO REFLECT WHERE USED, UPDATED NEXT ASSEMBLY		06/01/2011	TM	00448






DETAIL A
SCALE 1 : 2

NOTE: UNLESS OTHERWISE SPECIFIED.

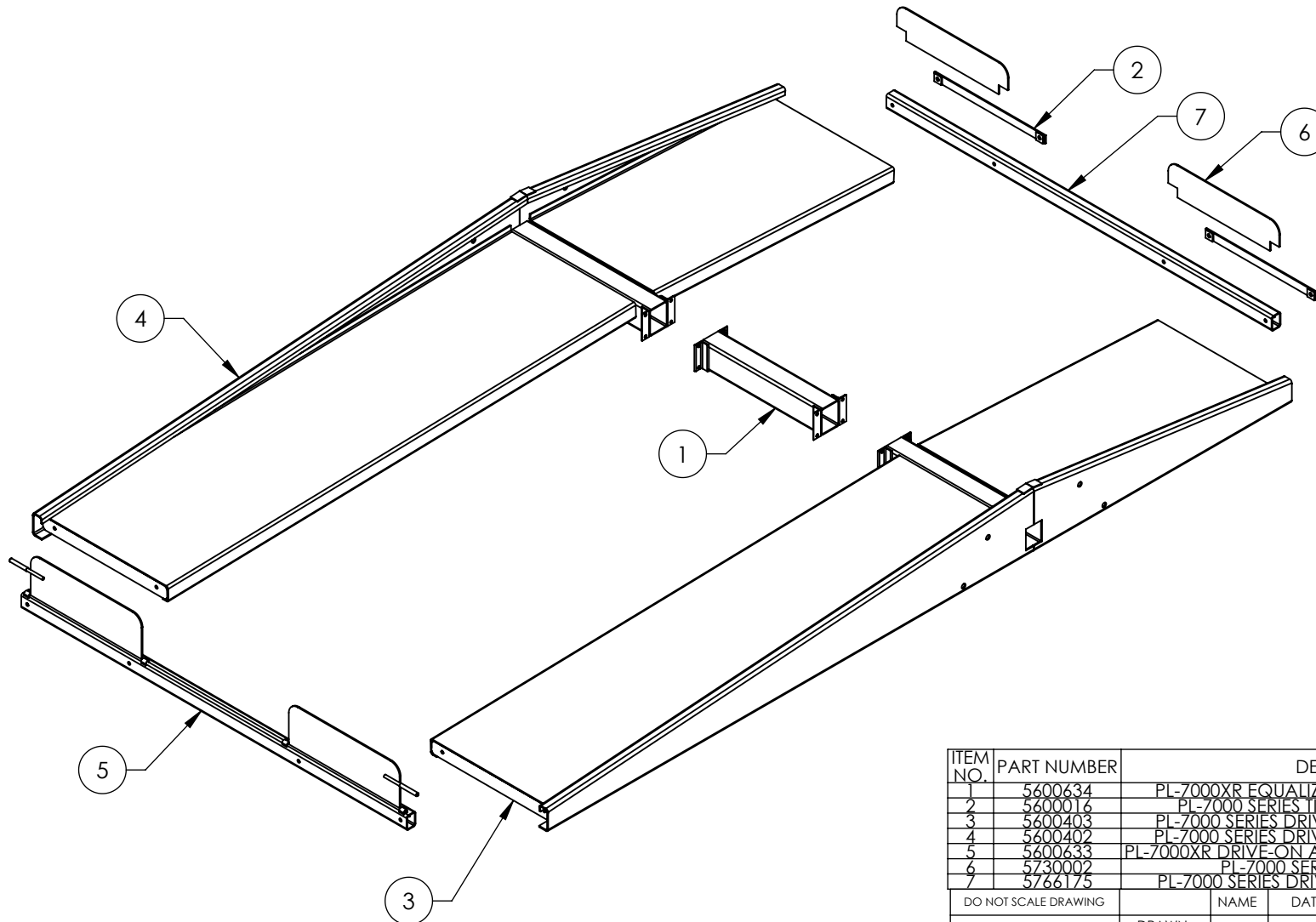
1. SEE SHIPPING INSTRUCTIONS FOR FINAL PACKAGING
2. ASSEMBLE ITEMS AS SHOWN

NEXT ASSEMBLY
5245042

ITEM NO	PART NUMBER	DESCRIPTION	QTY	REV
1	5620479	PL-7000 CONTROL ARM WELDMENT	1	A
2	5746110	PL-7000 SAFETY CONTROL HANDLE	1	A
3	5715014	Ø32mm PLASTIC BALL-M12x1.75	1	A
4	5575112	GP/PCL/XPR/PL-7000 SAFETY SHEAVE	1	C
5	5746109	PL-7000 SAFETY CONTROL SPACER	2	A
6	5565350	GP/PCL/XPR/PL-7000 SAFETY SHEAVE SPACER	1	C
7	5530097	HHB M6 x 1.0 x 50	2	-
8	5535357	NUT M6 x 1.0 NL	2	-

DO NOT SCALE DRAWING		NAME		DATE		<div> BendPak. <small>REMOVING AUTOMOBILE SERVICE SOLUTIONS</small></div> <div>1645 LEMONWOOD DR. SANTA PAULA, CA 93060</div>			
DIMENSIONS ARE IN MM		DRAWN	TM	03/10/2011					
<div></div>		CHECKED	MT	06/15/2011		<div>TITLE</div> <div>PL-7000 SERIES CONTROL ARM ASSEMBLY</div>			
		THIRD ANGLE PROJECTION							
MATERIAL: ---		<div></div>				SIZE DWG. NO.		REV	
SIZE: ---						A		5215517	
		PROPRIETARY AND CONFIDENTIAL THE INFORMATION CONTAINED IN THIS DRAWING IS THE SOLE PROPERTY OF BENDPAK INC. ANY REPRODUCTION IN PART OR AS A WHOLE WITHOUT THE WRITTEN PERMISSION OF BENDPAK INC. IS PROHIBITED.				SCALE: 1:10		SHEET 1 OF 1	

REV	DESCRIPTION	REVISION	DATE	EDITED BY	ECO#
A	PRODUCTION RELEASE, DERIVED FROM 5215187		05/31/2011	TM	00448
B	UPDATED BOM REVISION		03/31/2017	DB	00820

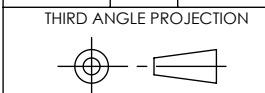


ITEM NO.	PART NUMBER	DESCRIPTION	QTY	REV
1	5600634	PL-7000XR EQUALIZER CHAIN TUBE WELDMENT	1	A
2	5600016	PL-7000 SERIES TIRE STOP BAR WELDMENT	2	D
3	5600403	PL-7000 SERIES DRIVE UP RAMP WELDMENT-RH	1	C
4	5600402	PL-7000 SERIES DRIVE UP RAMP WELDMENT-LH	1	C
5	5600633	PL-7000XR DRIVE-ON AND TIRE STOP TUBE WELDMENT	1	B
6	5730002	PL-7000 SERIES TIRE STOP PLATE	2	D
7	5766175	PL-7000 SERIES DRIVE-ON AND TIRE STOP TUBE	1	B

DO NOT SCALE DRAWING

DIMENSIONS ARE IN MM
TOLERANCES: MACHINE TO
0 = ± 1.5
0.0 = ± 0.5
0.00 = ± 0.13
ANGULAR: MACHINE TO
0 = $\pm 1/2^\circ$
SURFACE FINISH 1.6 Ra μ m
FOR MACHINED SURFACES
UNLESS OTHERWISE SPECIFIED

NAME	DATE
DRAWN TM	05/31/2011
CHECKED DB	4/26/2017



PROPRIETARY AND CONFIDENTIAL
THE INFORMATION CONTAINED IN THIS DRAWING IS
THE SOLE PROPERTY OF BENDPAK INC. ANY
REPRODUCTION IN PART OR AS A WHOLE WITHOUT
THE WRITTEN PERMISSION OF BENDPAK INC. IS
PROHIBITED.

BendPak.

1645 LEMONWOOD DR.
SANTA PAULA, CA 93060

TITLE: PL-7000XR DRIVE UP
RAMP ASSEMBLY

SIZE	DWG. NO.	REV
A	5215524	B

SCALE: 1:25

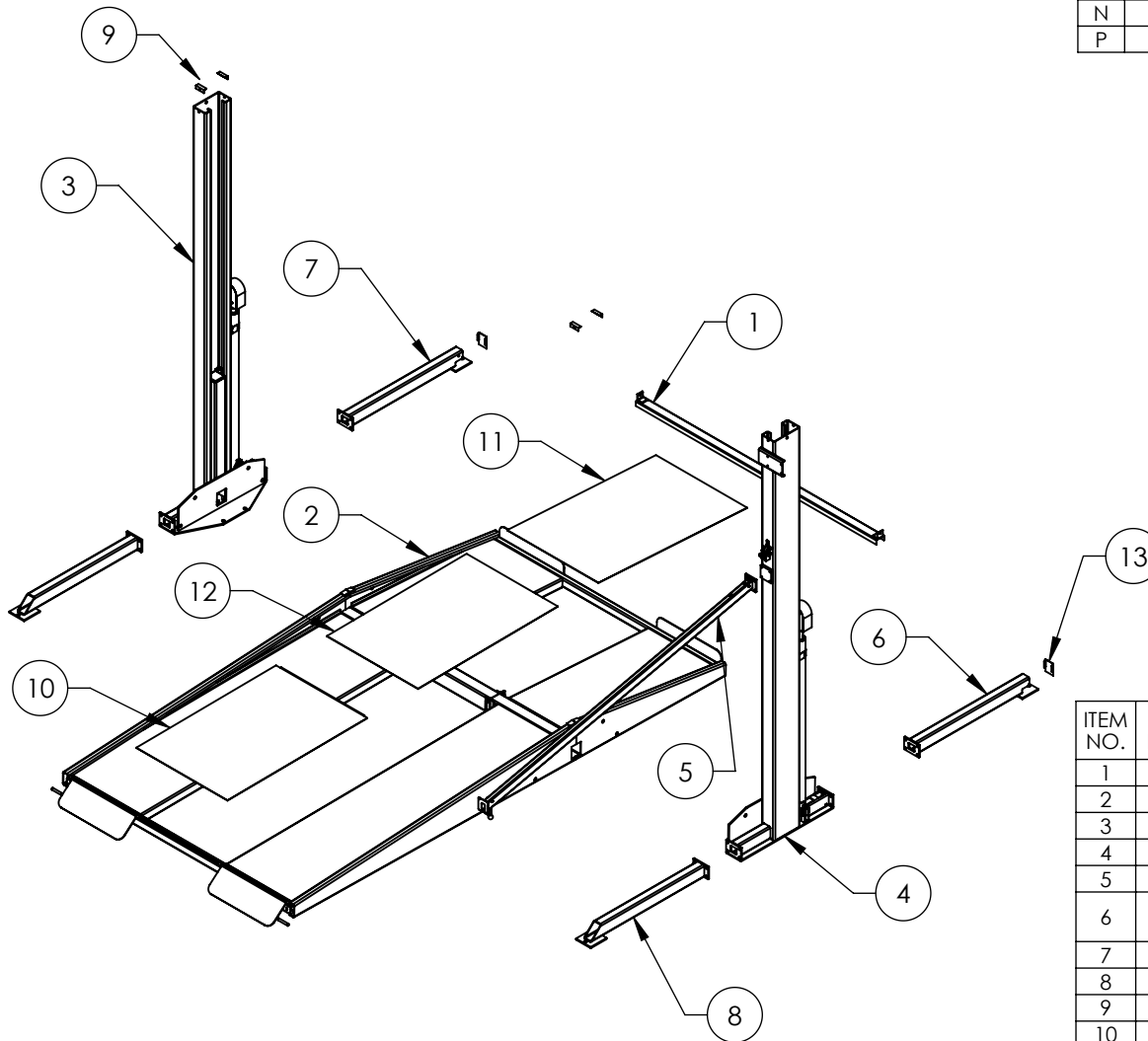
SHEET 1 OF 2

NOTE: UNLESS OTHERWISE SPECIFIED.

1. SEE SHIPPING INSTRUCTIONS FOR FINAL PACKAGING

NEXT ASSEMBLY
5245042

REVISION				
REV	DESCRIPTION	DATE	EDITED BY	ECO#
M	UPDATED BOM REVISIONS	01/15/2018	TS	00918
N	UPDATED BOM REVISIONS	03/09/2018	CA	00929
P	UPDATED BOM REVISIONS	06/14/2018	TM	00961

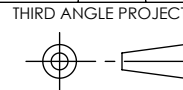


ITEM NO.	PART NUMBER	DESCRIPTION	QTY	REV
1	5600635	PL-7000 SERIES FLOOR CROSSTUBE WELDMENT	1	B
2	5215524	PL-7000XR DRIVE UP RAMP ASSEMBLY	1	B
3	5215211	PL-7000XR OFFSIDE POST ASSEMBLY	1	V
4	5215212	PL-7000XR CONTROL POST ASSEMBLY	1	X
5	5215517	PL-7000 SERIES CONTROL ARM ASSEMBLY	1	B
6	5620250	PL-7000 SERIES POWER SIDE POST BASE EXTENSION WELDMENT	1	C
7	5620251	PL-7000 SERIES OFF SIDE TUBE EXTENSION WELDMENT	1	C
8	5620254	PL-7000 TAPERED FOOT WELDMENT	2	A
9	5620266	PL-7000 SERIES POST TOP PLATE WELDMENT	2	C
10	5600632	PL-7000XR REAR DECK WELDMENT	1	A
11	5600631	PL-7000XR FRONT DECK WELDMENT	1	A
12	5600630	PL-7000XR CENTER DECK WELDMENT	1	A
13	5701083	PL-7000 SERIES TUBE EXTENSION COVER-LH	2	C

DO NOT SCALE DRAWING

	NAME	DATE
DRAWN	TM	05/31/2011
CHECKED	CA	6/22/2018

DIMENSIONS ARE IN MM
TOLERANCES: MACHINE TO
0 = ±1.5
0.0 = ±0.5
0.00 = ±0.13
ANGULAR: MACHINE TO
0 = ±1/2°
SURFACE FINISH 1.6 Ra µm
FOR MACHINED SURFACES
UNLESS OTHERWISE SPECIFIED



PROPRIETARY AND CONFIDENTIAL
THE INFORMATION CONTAINED IN THIS DRAWING IS
THE SOLE PROPERTY OF BENDPAK INC. ANY
REPRODUCTION IN PART OR AS A WHOLE WITHOUT
THE WRITTEN PERMISSION OF BENDPAK INC. IS
PROHIBITED.

BendPak.

1645 LEMONWOOD DR.
SANTA PAULA, CA 93060

TITLE: PL-7000XR LIFT
SUPERSTRUCTURE

SIZE	DWG. NO.	REV
A	5245042	P

SCALE: 1:50

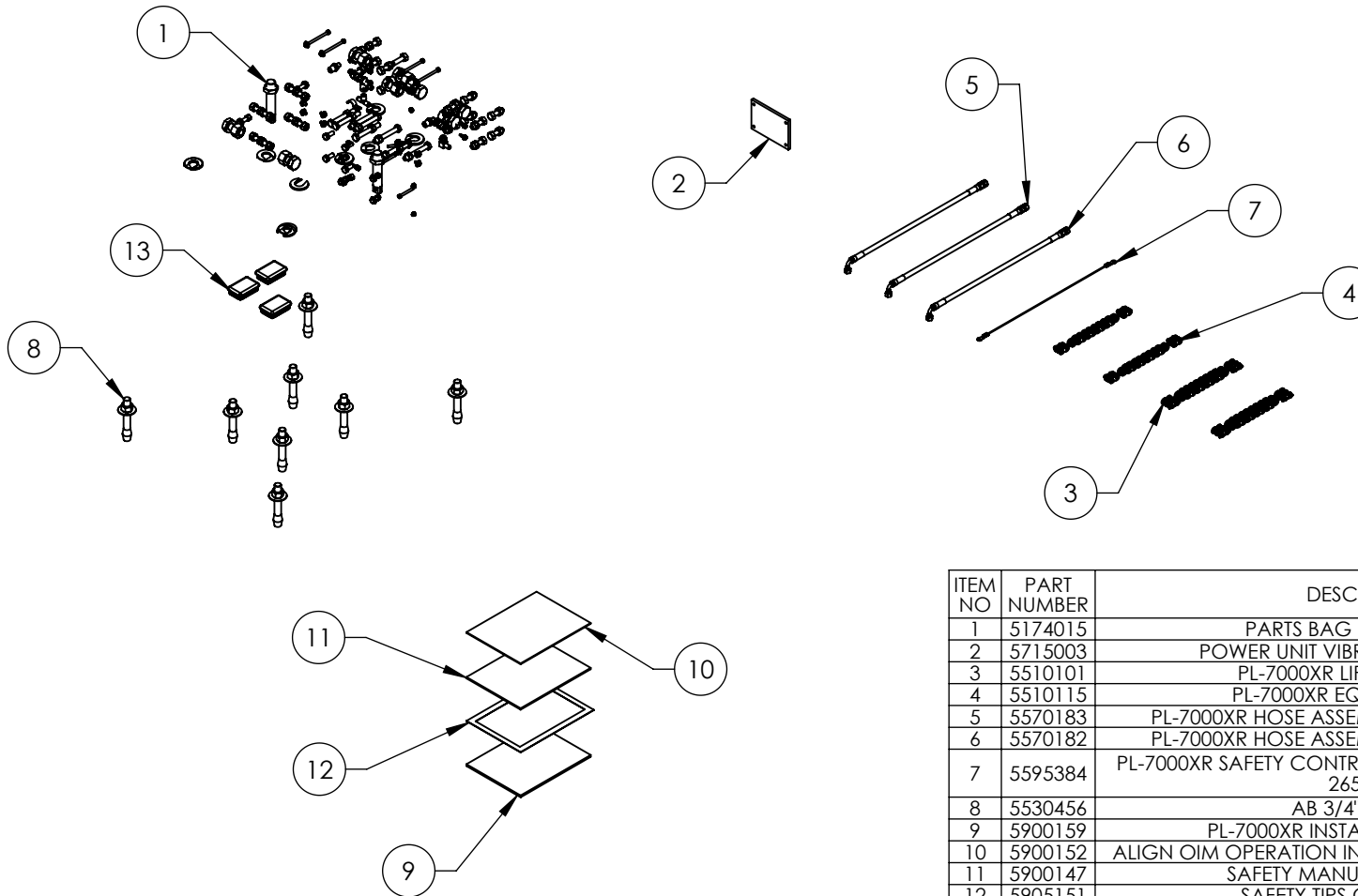
SHEET 1 OF 1

NOTE: UNLESS OTHERWISE SPECIFIED.

1. SEE SHIPPING INSTRUCTIONS FOR FINAL PACKAGING

NEXT ASSEMBLY
5260185

REVISION				
REV	DESCRIPTION	DATE	EDITED BY	ECO#
F	UPDATED BOM REVISIONS	02/01/2017	DB	00807
G	ADDED 5715360, REMOVED 5905925 & 5905630	06/09/2017	TM	00831
H	UPDATED BOM REVISION	06/14/2018	TM	00961



ITEM NO	PART NUMBER	DESCRIPTION	QTY	REV
1	5174015	PARTS BAG PL-7000 SERIES	1	G
2	5715003	POWER UNIT VIBRATION DAMPENER	1	B
3	5510101	PL-7000XR LIFT HEAD CHAIN	2	B
4	5510115	PL-7000XR EQUALIZER CHAIN	2	A
5	5570183	PL-7000XR HOSE ASSEMBLY Ø6.4 x 631.5mm SB	1	B
6	5570182	PL-7000XR HOSE ASSEMBLY Ø6.4 x 2480mm SB	2	B
7	5595384	PL-7000XR SAFETY CONTROL CABLE ASSEMBLY Ø2.4 x 2650mm	1	B
8	5530456	AB 3/4" x 4 - 3/4"	8	-
9	5900159	PL-7000XR INSTALLATION MANUAL	1	-
10	5900152	ALIGN OIM OPERATION INSPECTION & MAINTENANCE	1	-
11	5900147	SAFETY MANUAL ALI / SM 93-1	1	-
12	5905151	SAFETY TIPS CARD ALI-ST 90	1	-
13	5715360	POLYETHYLENE TUBE COVER 2.00 x 3.00in	3	-

DO NOT SCALE DRAWING		NAME	DATE	 1645 LEMONWOOD DR. SANTA PAULA, CA 93060
DRAWN		TM	05/31/2011	
CHECKED		CA	6/22/2018	
DIMENSIONS ARE IN MM		THIRD ANGLE PROJECTION		TITLE:
		<small>PROPRIETARY AND CONFIDENTIAL</small> <small>THE INFORMATION CONTAINED IN THIS DRAWING IS THE SOLE PROPERTY OF BENDPAK INC. ANY REPRODUCTION IN PART OR AS A WHOLE WITHOUT THE WRITTEN PERMISSION OF BENDPAK INC. IS PROHIBITED.</small>		PL-7000XR PARTS BOX
		SIZE	DWG. NO.	REV
		A	5250060	H
SCALE: 1:20				SHEET 1 OF 1

NOTE: UNLESS OTHERWISE SPECIFIED.

1. SEE SHIPPING INSTRUCTIONS FOR FINAL PACKAGING

NEXT ASSEMBLY
5260185

PART SPECIFICATION FORM

ACP

BENDPAK Number:	5570129
MRP Description:	1/4" HYDRAULIC HOSE 31 CL-0400X
Date:	05/24/2018
ECO :	00950

1. Engineering Specification

Application:

1/4" HYDRAULIC HOSE

Detailed Description:

ONE or TWO BRAID STEEL WIRE HYDRAULIC HOSE

SIZE: 1/4" / 6mm I.D. MIN
0.53" / 13.4mm O.D. MAX

SPECS: 5700PSI OR 393 BAR WORKING PRESSURE MINIMUM
17100PSI OR 1179 BAR MINIMUM BURST PRESSURE MINIMUM
3" / 80mm MIN BEND RADIUS

COLOR: BLACK

ADDITIONAL CONTACT INFORMATION:

Xin Yurong

Shandong Ningjin High Energy Hose Co., Ltd.

Tel: +86 534-5421821

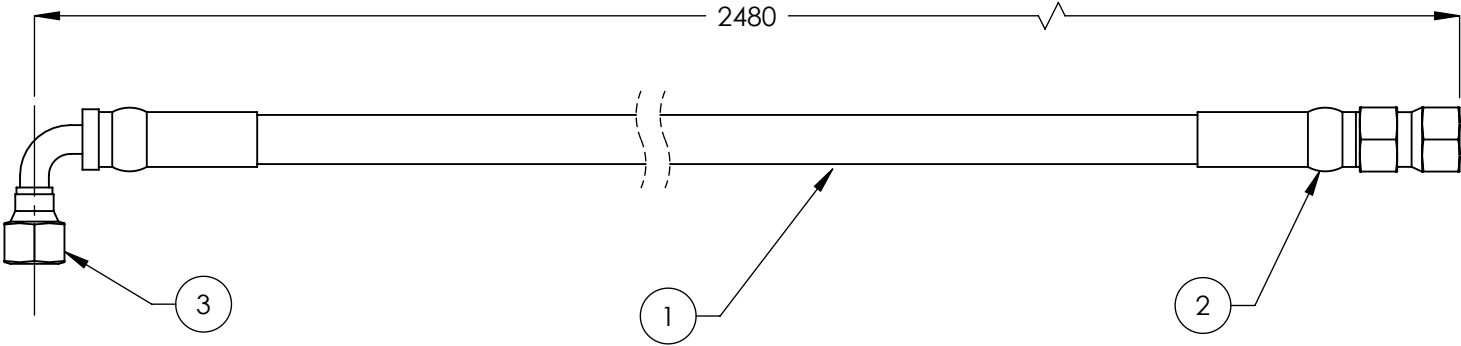
No. 7, Taishan Rd., Industrial Park, Ningjin County, Shandong, China



2. Vendor Information (Or for Reference)

Approved Vendor	Vendor Part #	Contact #	AUTHORIZED COMPONENT PROVIDER
1) Ningjin Hydraulic Hose Co.	5570129	+86 534-5421821	X
2)			
OR BENDPAK ENGINEERING APPROVED EQUIVALENT			


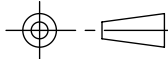
REVISION				
REV	DESCRIPTION	DATE	EDITED BY	ECO#
A	PRODUCTION RELEASE, DERIVED FROM 5570907	05/31/2011	TM	00448
B	REPLACED 5570110 WITH 5570129	12/23/2014	TM	00679
B-001	UPDATED NEXT ASSEMBLY	06/07/2017	TM	00831



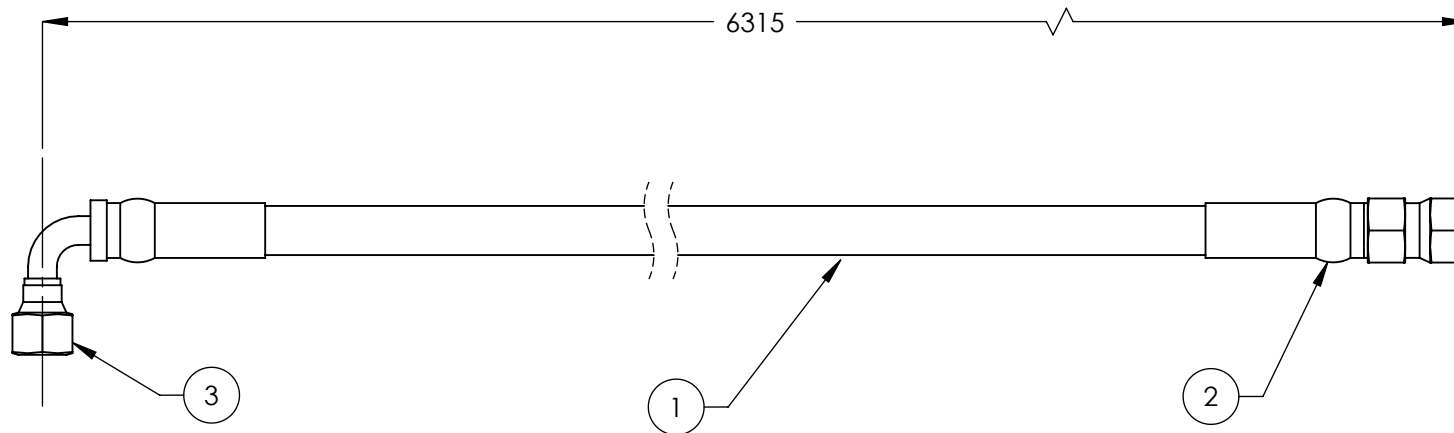
NOTE: UNLESS OTHERWISE SPECIFIED.

1. FOR ITEM 1 SPECIFICATIONS REFER TO PART SPECIFICATION FORM
2. (*)ITEM 1 QTY FOR REFERENCE ONLY


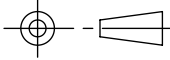
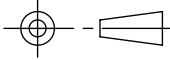
NEXT ASSEMBLY
5250060
5250372

ITEM NO.	PART NUMBER	DESCRIPTION		QTY.	REV	
1	5570129	Ø6.4 ID HYDRAULIC HOSE		2426mm*	-	
2	5550325	FTG NPL Ø1/4 CRIMP x -04 JIC			-	
3	5550345	FTG ELB Ø1/4 CRIMP x -04 JIC			-	
DO NOT SCALE DRAWING		NAME	DATE	<div> 1645 LEMONWOOD DR. SANTA PAULA, CA 93060</div>		
<div>DIMENSIONS ARE IN MM TOLERANCES: 0. = ±1.5 0.0 = ±1.0 0.00 = ±0.25 0.000 = ±0.13 ANGULAR: MACH±2° SURFACE FINISH 1.6 ISO Ra µm FOR MACHINED SURFACES UNLESS OTHERWISE SPECIFIED</div>		DRAWN	TM 05/31/2011			
		CHECKED	TM 6/22/2017			
		THIRD ANGLE PROJECTION		TITLE:		
				PL-7000XR HOSE ASSEMBLY Ø6.4 x 2480mm SB		
		<div>PROPRIETARY AND CONFIDENTIAL THE INFORMATION CONTAINED IN THIS DRAWING IS THE SOLE PROPERTY OF BENDPAK INC. ANY REPRODUCTION IN PART OR AS A WHOLE WITHOUT THE WRITTEN PERMISSION OF BENDPAK INC. IS PROHIBITED.</div>		SIZE	DWG. NO.	REV
				A	5570182	B
SCALE: 1:2				SHEET 1 OF 1		

REVISION				
REV	DESCRIPTION	DATE	EDITED BY	ECO#
A	PRODUCTION RELEASE, DERIVED FROM 5570906	05/31/2011	TM	00448
B	REPLACED 5570110 WITH 5570129	12/23/2014	TM	00679
B-001	UPDATED NEXT ASSEMBLY	06/06/2017	TM	00831



ITEM NO	PART NUMBER	DESCRIPTION	QTY.	REV
1	5570129	Ø6.4 ID HYDRAULIC HOSE	6261mm*	-
2	5550325	FTG NPL Ø1/4 CRIMP x -04 JIC	1	-
3	5550345	FTG ELB Ø1/4 CRIMP x -04 JIC	1	-

DO NOT SCALE DRAWING		NAME	DATE	 1645 LEMONWOOD DR. SANTA PAULA, CA 93060	
		DRAWN	TM 05/31/2011		
		CHECKED	TM 6/22/2017		
DIMENSIONS ARE IN MM TOLERANCES: 0. = ±1.5 0.0 = ±1.0 0.00 = ±0.25 0.000 = ±0.13 ANGULAR: MACH±2° SURFACE FINISH 1.6 ISO Ra µm FOR MACHINED SURFACES UNLESS OTHERWISE SPECIFIED		THIRD ANGLE PROJECTION		TITLE:	
				PL-7000XR HOSE ASSEMBLY Ø6.4 x 6315mm SB	
				SIZE DWG. NO.	REV
				A 5570183	B
				SCALE: 1:2	
				SHEET 1 OF 1	

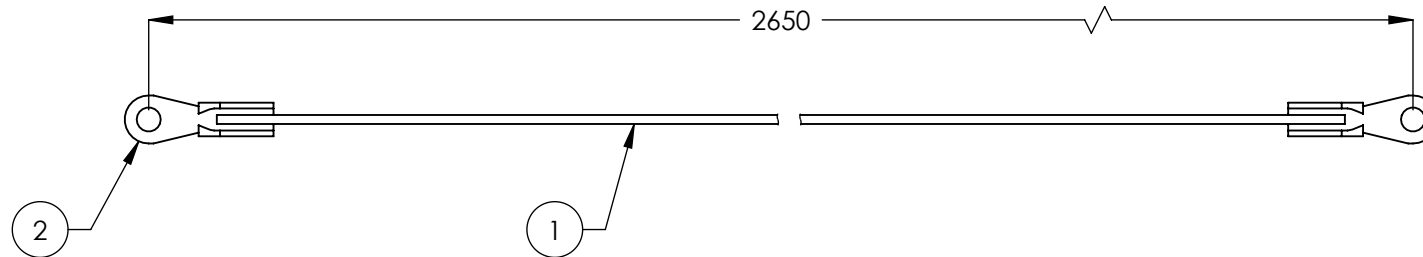
NOTE: UNLESS OTHERWISE SPECIFIED.

- FOR ITEM 1 SPECIFICATIONS REFER TO PART SPECIFICATION FORM
- (*)ITEM 1 QTY FOR REFERENCE ONLY

NEXT ASSEMBLY
5250060
5250372

PROPRIETARY AND CONFIDENTIAL
THE INFORMATION CONTAINED IN THIS DRAWING IS
THE SOLE PROPERTY OF BENDPAK INC. ANY
REPRODUCTION IN PART OR AS A WHOLE WITHOUT
THE WRITTEN PERMISSION OF BENDPAK INC. IS
PROHIBITED.


		REVISION			
REV	DESCRIPTION	DATE	EDITED BY	ECO#	
A	PRODUCTION RELEASE, DERIVED FROM 5595064	03/10/2011	TM	00441	
B	UPDATED TITLE TO REFLECT WHERE USED, UPDATED NEXT ASSEMBLY	06/01/2011	TM	00448	
B-001	UPDATED NEXT ASSEMBLY	06/07/2017	TM	00831	

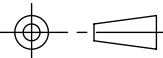


NOTE: UNLESS OTHERWISE SPECIFIED.

- FOR ITEM 1 SPECIFICATIONS REFER TO PART SPECIFICATION FORM
- LENGTH SHOWN IS AFTER CRIMPING
- ITEM 1 QTY FOR REFERENCE ONLY

ITEM NO	PART NUMBER	DESCRIPTION		QTY	REV
1	5595362	CABLE Ø2.38mm 7x7		1	A
2	5505036	3/32" STAKE EYE		2	A

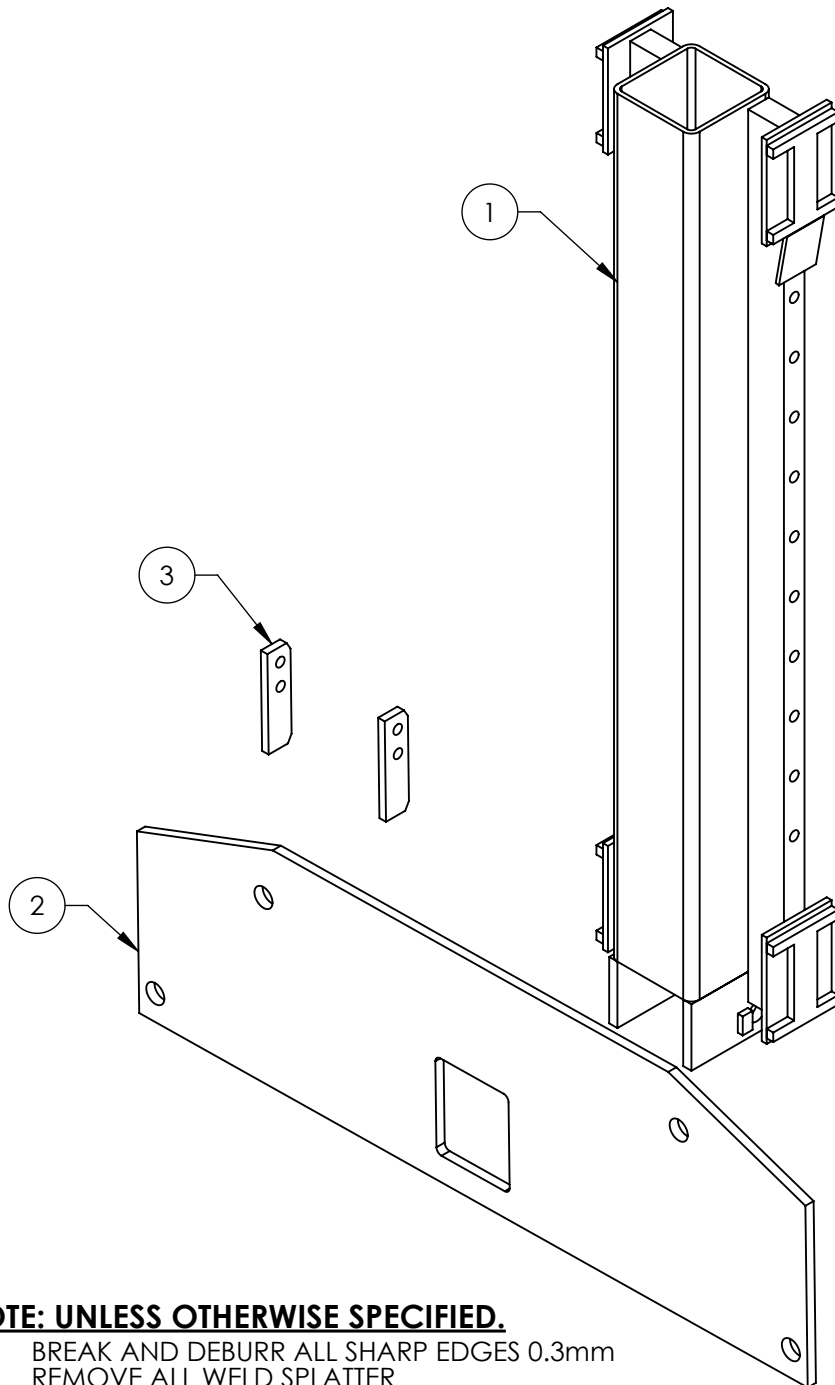
DO NOT SCALE DRAWING		NAME	DATE	 1645 LEMONWOOD DR. SANTA PAULA, CA 93060
		DRAWN	TM 03/10/2011	
		CHECKED	TM 6/22/2017	

DIMENSIONS ARE IN MM TOLERANCES: 0. = ±1.5 0.0 = ±0.5 ANGULAR: 0. = ±2° SURFACE FINISH 1.6 ISO Ra µm FOR MACHINED SURFACES UNLESS OTHERWISE SPECIFIED	THIRD ANGLE PROJECTION		TITLE:	PL-7000XR SAFETY CONTROL CABLE ASSEMBLY Ø2.4 x 2650mm	
			SIZE	DWG. NO.	REV
	PROPRIETARY AND CONFIDENTIAL THE INFORMATION CONTAINED IN THIS DRAWING IS THE SOLE PROPERTY OF BENDPAK INC. ANY REPRODUCTION IN PART OR AS A WHOLE WITHOUT THE WRITTEN PERMISSION OF BENDPAK INC. IS PROHIBITED.		A	5595384	B

SCALE: 1:2				SHEET 1 OF 1	
------------	--	--	--	--------------	--

NEXT ASSEMBLY
5250060
5250372

REVISION				
REV	DESCRIPTION	DATE	EDITED BY	ECO#
B	UPDATED BOM REVISIONS	09/10/2009	AC	00300
C	UPDATED BOM REVISION	11/12/2009	AC	00318
D	UPDATED BOM REVISION	04/30/2010	AC	00350
D-001	CLARIFIED 5731037 WELD pg2	01/30/2013	TM	00577
D-002	UPDATED PAINT WAS BLUE NOW GREY	06/11/2018	TS	00956


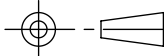


NOTE: UNLESS OTHERWISE SPECIFIED.

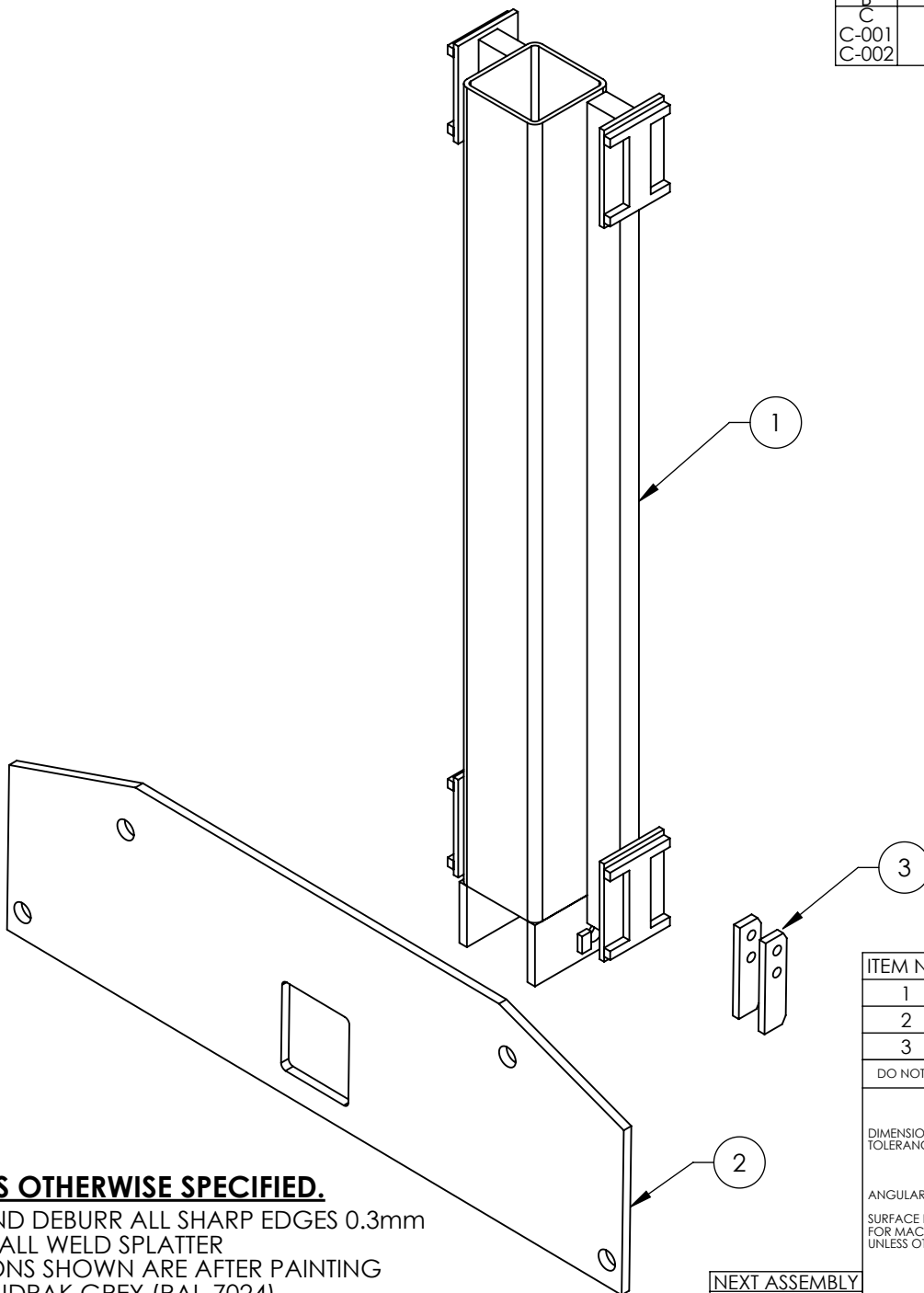
1. BREAK AND DEBURR ALL SHARP EDGES 0.3mm
2. REMOVE ALL WELD SPLATTER
3. DIMENSIONS SHOWN ARE AFTER PAINTING
4. PAINT BENDPAK GREY (RAL-7024)

NEXT ASSEMBLY
5215324

ITEM NO.	PART NUMBER	DESCRIPTION		QTY	REV
1	5620260	PL-7000 SERIES LIFT HEAD TUBE WELDMENT - RH		1	D
2	5731037	PL-7000 LIFT HEAD FACE PLATE		1	A
3	5736233	PL-7000 LIFT HEAD CHAIN CONNECTOR PLATE		2	C

DO NOT SCALE DRAWING		NAME	DATE	<div> 1645 LEMONWOOD DR. SANTA PAULA, CA 93060</div>		
DIMENSIONS ARE IN MM TOLERANCES: 0. = ±1.5 0.0 = ±0.5 ANGULAR: 0. = ±2° SURFACE FINISH 1.6 ISO Ra µm FOR MACHINED SURFACES UNLESS OTHERWISE SPECIFIED		DRAWN	GJZ			12/04/2008
		CHECKED	MM			01/30/2013
		THIRD ANGLE PROJECTION		TITLE:		
				PL-7000 LIFT HEAD WELDMENT - RH		
		<div>PROPRIETARY AND CONFIDENTIAL</div> <div>THE INFORMATION CONTAINED IN THIS DRAWING IS THE SOLE PROPERTY OF BENDPAK INC. ANY REPRODUCTION IN PART OR AS A WHOLE WITHOUT THE WRITTEN PERMISSION OF BENDPAK INC. IS PROHIBITED.</div>		SIZE	DWG. NO.	REV
				A	5600225	D
		SCALE: 1:6.5			SHEET 1 OF 2	


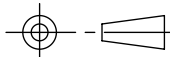
REVISION		DATE	EDITED BY	ECO#
REV	DESCRIPTION			
A	PRODUCTION RELEASE	12/08/2008	GJZ	00255
B	UPDATED BOM REVISIONS	09/10/2009	AC	00300
C	UPDATED BOM REVISION	04/30/2010	AC	00350
C-001	CLARIFIED 5731037 WELD pg2	01/30/2013	TM	00577
C-002	UPDATED COLOR WAS BLUE NOW GREY	06/12/2018	TS	00956



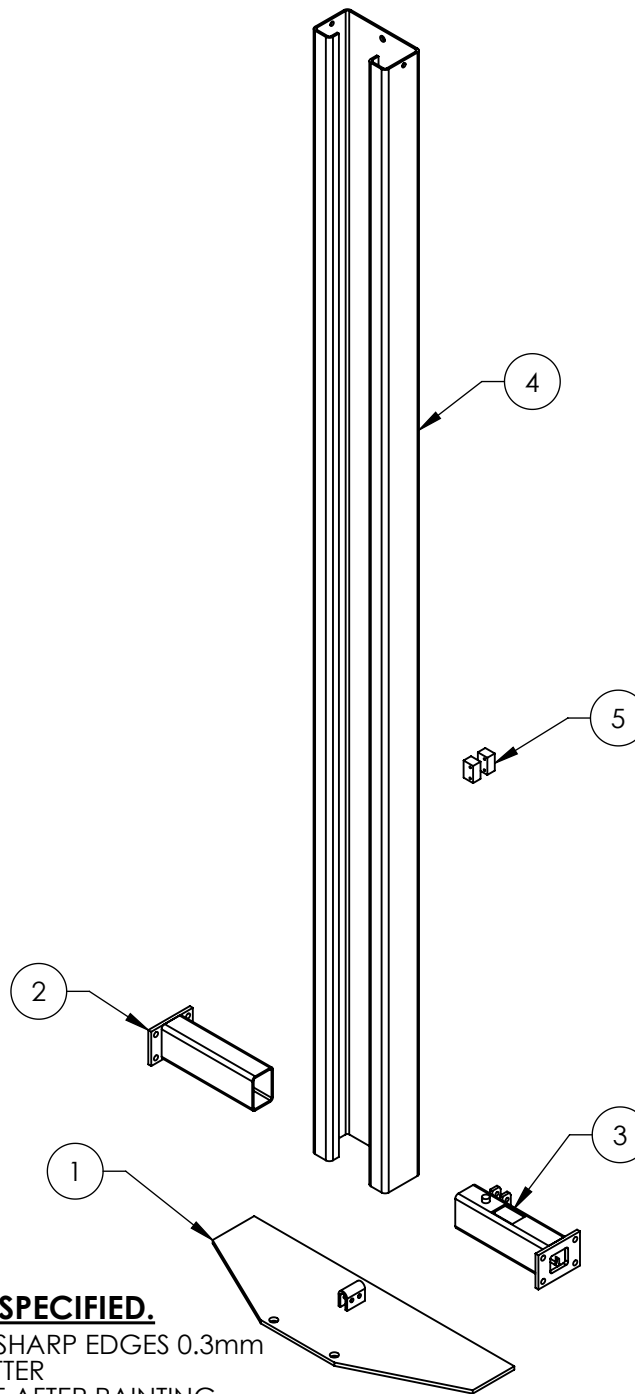
NOTE: UNLESS OTHERWISE SPECIFIED.

1. BREAK AND DEBURR ALL SHARP EDGES 0.3mm
2. REMOVE ALL WELD SPLATTER
3. DIMENSIONS SHOWN ARE AFTER PAINTING
4. PAINT BENDPAK GREY (RAL-7024)

NEXT ASSEMBLY
5215325

ITEM NO	PART NUMBER	DESCRIPTION		QTY	REV
1	5620261	PL-7000 SERIES LIFT HEAD TUBE WELDMENT-LH		1	C
2	5731037	PL-7000 LIFT HEAD FACE PLATE		1	A
3	5736233	PL-7000 LIFT HEAD CHAIN CONNECTOR PLATE		2	C
DO NOT SCALE DRAWING		NAME	DATE	<div></div> <div>1645 LEMONWOOD DR. SANTA PAULA, CA 93060</div>	
<div>DIMENSIONS ARE IN MM TOLERANCES: 0. = ±1.5 0.0 = ±0.5</div> <div>ANGULAR: 0. = ±2°</div> <div>SURFACE FINISH 1.6 ISO Ra µm FOR MACHINED SURFACES UNLESS OTHERWISE SPECIFIED</div>		DRAWN	GJZ 12/08/2008		
		CHECKED	MM 01/30/2013		
		THIRD ANGLE PROJECTION		TITLE:	
				PL-7000 LIFT HEAD WELDMENT - LH	
		PROPRIETARY AND CONFIDENTIAL THE INFORMATION CONTAINED IN THIS DRAWING IS THE SOLE PROPERTY OF BENDPAK INC. ANY REPRODUCTION IN PART OR AS A WHOLE WITHOUT THE WRITTEN PERMISSION OF BENDPAK INC. IS PROHIBITED.		SIZE DWG. NO.	REV
		<div>A</div>		5600226	C
				SCALE: 1:6.5	

REVISION				
REV	DESCRIPTION	DATE	EDITED BY	ECO#
E	REPLACED 5620253 WITH 5620888, PAINT WAS BLUE NOW GRAY	06/09/2017	TM	00831
F	UPDATED BOM REVISION	08/18/2017	TS	00869
G	WAS 37 NOW 35, WAS 10 NOW 15	01/15/2018	TS	00918



NOTE: UNLESS OTHERWISE SPECIFIED.

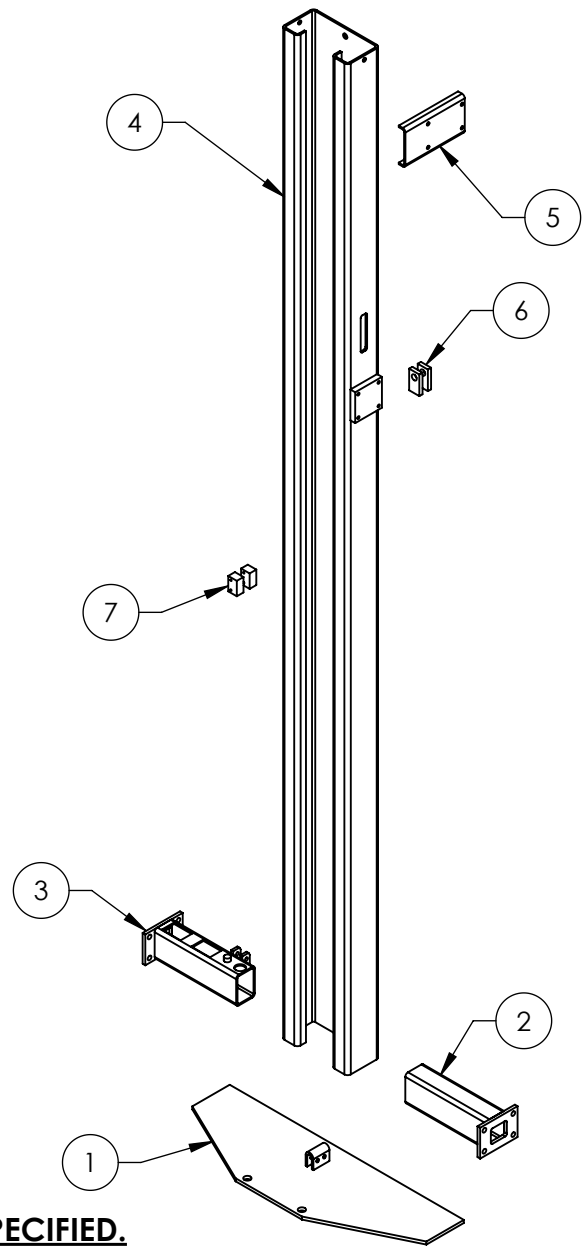
- BREAK AND DEBURR ALL SHARP EDGES 0.3mm
- REMOVE ALL WELD SPLATTER
- DIMENSIONS SHOWN ARE AFTER PAINTING
- PAINT BENDPAK GRAY (RAL-7024)

NEXT ASSEMBLY
5215211

ITEM NO	PART NUMBER	DESCRIPTION	QTY	REV
1	5620262	PL-7000 POST BASE PLATE WELDMENT	1	B
2	5620252	PL-7000 POST BASE TUBE WELDMENT #2	1	A
3	5620888	PL-7000 SERIES POST BASE TUBE WELDMENT #3	1	B
4	5701085	PL-7000XR OFF SIDE POST	1	B
5	5736036	PL-7000 SERIES TIE STRAP BLOCK	2	B

DO NOT SCALE DRAWING		NAME	DATE	 1645 LEMONWOOD DR. SANTA PAULA, CA 93060	
DRAWN		GJZ	12/12/2008		
CHECKED		AW	1/29/2018		
DIMENSIONS ARE IN MM TOLERANCES: 0. = ±1.5 0.0 = ±0.5 ANGULAR: 0. = ±2° SURFACE FINISH 1.6 ISO Ra µm FOR MACHINED SURFACES UNLESS OTHERWISE SPECIFIED		THIRD ANGLE PROJECTION 		TITLE: PL-7000XR OFFSIDE POST WELDMENT	
PROPRIETARY AND CONFIDENTIAL THE INFORMATION CONTAINED IN THIS DRAWING IS THE SOLE PROPERTY OF BENDPAK INC. ANY REPRODUCTION IN PART OR AS A WHOLE WITHOUT THE WRITTEN PERMISSION OF BENDPAK INC. IS PROHIBITED.		SIZE	DWG. NO.	REV	
		A	5600228	G	
SCALE: 1:18				SHEET 1 OF 2	

REVISION				
REV	DESCRIPTION	DATE	EDITED BY	ECO#
F	REPLACED 5620256 WITH 5620889	06/09/2017	TM	00831
G	UPDATED BOM REVISION	08/18/2017	TS	00869
H	WAS 37 NOW 35, WAS 10 NOW 15, UPDATED BOM REVISION	01/15/2018	TS	00918


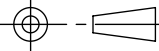


NOTE: UNLESS OTHERWISE SPECIFIED.

- BREAK AND DEBURR ALL SHARP EDGES 0.3mm
- REMOVE ALL WELD SPLATTER
- DIMENSIONS SHOWN ARE AFTER PAINTING
- PAINT BENDPAK GRAY (RAL-7024)

NEXT ASSEMBLY
5215212

ITEM NO	PART NUMBER	DESCRIPTION	QTY	REV
1	5620262	PL-7000 POST BASE PLATE WELDMENT	1	B
2	5620252	PL-7000 POST BASE TUBE WELDMENT #2	1	A
3	5620889	PL-7000 SERIES POST BASE TUBE WELDMENT #1	1	C
4	5620272	PL-7000XR CONTROL POST WELDMENT	1	D
5	5701077	PL-7000 MOUNTING BRACKET	1	A
6	5736034	PL-7000 SERIES SAFETY RELEASE PLATE	2	C
7	5736036	PL-7000 SERIES TIE STRAP BLOCK	2	B

DO NOT SCALE DRAWING		NAME	DATE	 1645 LEMONWOOD DR. SANTA PAULA, CA 93060
<p>DIMENSIONS ARE IN MM TOLERANCES: 0. = ±1.5 0.0 = ±0.5</p> <p>ANGULAR: 0. = ±2°</p> <p>SURFACE FINISH 1.6 ISO Ra µm FOR MACHINED SURFACES UNLESS OTHERWISE SPECIFIED</p>		DRAWN	GJZ 12/15/2008	
		CHECKED	AW 1/29/2018	
		THIRD ANGLE PROJECTION		TITLE:
				PL-7000XR CONTROL POST WELDMENT
<p>PROPRIETARY AND CONFIDENTIAL</p> <p>THE INFORMATION CONTAINED IN THIS DRAWING IS THE SOLE PROPERTY OF BENDPAK INC. ANY REPRODUCTION IN PART OR AS A WHOLE WITHOUT THE WRITTEN PERMISSION OF BENDPAK INC. IS PROHIBITED.</p>		SIZE	DWG. NO.	REV
		A	5600229	H
SCALE: 1:20			SHEET 1 OF 2	

PART SPECIFICATION FORM

BENDPAK Number:	5900159
MRP Description:	PL-7000XR INSTALLATION MANUAL
Date:	02/16/2018
ECO :	00910

1. Engineering Specification

Application:

INSTALLATION MANUAL

Detailed Description:

WARNING

PLEASE READ THE ENTIRE CONTENTS OF THIS MANUAL PRIOR TO INSTALLATION AND OPERATION. BY PROCEEDING YOU AGREE THAT YOU FULLY UNDERSTAND AND COMPREHEND THE FULL CONTENTS OF THIS MANUAL. FORWARD THIS MANUAL TO ALL OPERATORS. FAILURE TO OPERATE THIS EQUIPMENT AS DIRECTED MAY CAUSE INJURY OR DEATH.
 Manual Rev. C – April 2017
 Manual P/N 5900159

INSTALLATION AND OPERATION MANUAL

PARKING LIFT / 7,000 POUND CAPACITY

Model:
 PL-7000XR VERSION A



READ FIRST



Do not operate this machine until you read and understand all the dangers, warnings, and cautions in this manual.



Keep this operation manual near the machine at all times. Make sure that ALL USERS read this manual.

SHIPPING DAMAGE CLAIMS

When this equipment is shipped, title passes to the purchaser upon receipt from the carrier. Consequently, claims for the material damaged in shipment must be made by the purchaser against the transportation company at the time shipment is received.

BE SAFE

Your new lift was designed and built with safety in mind. However, your overall safety can be increased by proper training and thoughtful operation on the part of the operator. DO NOT operate or repair this equipment without reading this manual and the important safety instructions shown inside.



1645 Lemonwood Dr.
 Santa Paula, CA. 93060, USA
 Toll Free 1-800-253-2363
 Tel: 1-805-933-9970
 Fax: 1-805-933-9160
 www.bendpak.com

2. Vendor Information

Approved Vendor	Vendor Part #	Contact #	Preferred Vendor
1)			

PART SPECIFICATION FORM STANDARD

BENDPAK Number:	5905002
MRP Description:	PL-7 SERIES DECK WARNING LABEL
Date:	08/29/2017
ECO :	00869

1. Engineering Specification

Application:

PL-7000 SERIES DECAL

Detailed Description:

Trim: 5" W x 7" H
 Material: 2 Mil. White Adhesive Vinyl
 Ink: U.V. protected CMYK 4/C Process
 Finish: Polished
 Print Process: Offset Lithography - 200 line-screen or 300 p.p.i. for digital
 Lamination: Clear-gloss over-laminate for abrasion, chemical, and ultra violet protection



2. Vendor Information (Or for Reference)

Approved Vendor	Vendor Part #	Contact #	Preferred Vendor
1)			
2)			
OR BENDPAK ENGINEERING APPROVED EQUIVALENT			

PART SPECIFICATION FORM STANDARD

BENDPAK Number:	5905268
MRP Description:	PL-7000 SERIES_Control_Box_
Date:	08/23/2017
ECO :	00869

1. Engineering Specification

Application:

DECAL

Detailed Description:

Trim: 2.75" W x 2.75" H

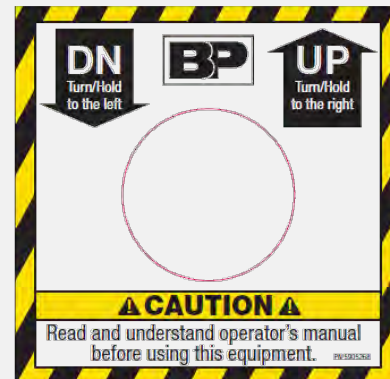
Material: 2 Mil. White Adhesive Vinyl

Ink: U.V. protected CMYK 4/C Process

Finish: Polished

Print Process: Offset Lithography - 200 line-screen
or 300 p.p.i. for digital

Lamination: Clear-gloss over-laminate for abrasion,
chemical, and ultra violet protection



2. Vendor Information (Or for Reference)

Approved Vendor	Vendor Part #	Contact #	Preferred Vendor
1)			
2)			
OR BENDPAK ENGINEERING APPROVED EQUIVALENT			

PART SPECIFICATION FORM

BENDPAK Number:	5905350
MRP Description:	WARNING PINCH POINTS SMALL
Date:	07/08/2019
ECO :	01101

1. Engineering Specification

Application:

WARNING STICKER

Detailed Description:

Size: 15" W x 1.5" H (381mm x 38mm)

Material: White Vinyl Pressure Sensitive Adhesive

Thickness: 4 Mil

Ink: U.V. protected CMYK 4/C Process

Finish: Polished

Print Process: Offset Lithography - 200 line-screen or 300 p.p.i. for digital

Lamination: Clear-gloss over-laminate for abrasion, chemical, and ultra violet protection



2. Vendor Information

Approved Vendor	Vendor Part #	Contact #	Preferred Vendor
1)			

PART SPECIFICATION FORM STANDARD

BENDPAK Number:	5905365
MRP Description:	PL-7000 BP VERTICAL LABEL
Date:	07/03/2019
ECO :	01101

1. Engineering Specification

Application:

BENDPAK LOGO

Detailed Description:

Trim: 2.75" W x 23.75" H

Material: 2 Mil White Adhesive Vinyl

Ink: U.V. protected, Opaque White

Finish: Polished

Print Process: Silk Screen, 85 line-screen (Yellow color in file represents what should be clear PET material and SHOULD NOT print as Yellow ink. White area in file represents Opaque White ink.)

Lamination: Clear-gloss over-laminate for abrasion, chemical, and ultra violet protection



2. Vendor Information (Or for Reference)

Approved Vendor	Vendor Part #	Contact #	Preferred Vendor
1)			
2)			
OR BENDPAK ENGINEERING APPROVED EQUIVALENT			

PART SPECIFICATION FORM

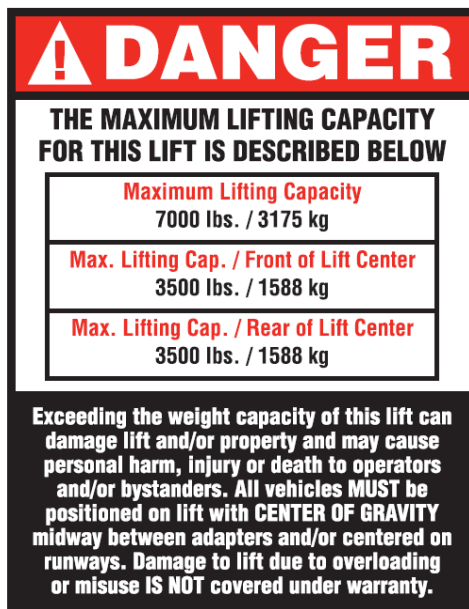
BENDPAK Number:	5905401
MRP Description:	MAX CAP DANGER 7K
Date:	05/06/2013
ECO :	00593

1. Engineering Specification

Application:

LIFT CAPACITY STICKER

Detailed Description:



SIZE: 5" L x 4" W (127mm x 100mm)

P/N 5905401

2. Vendor Information

Approved Vendor	Vendor Part #	Contact #	Preferred Vendor
1)			

PART SPECIFICATION FORM

STANDARD

BENDPAK Number:	5905569
MRP Description:	PL-7000 SERIES SAFETY PLACARD
Date:	07/03/2019
ECO :	01101

1. Engineering Specification

Application:

PLACARD

Detailed Description:

Trim: 6.5"W x 10.5"H (165.1mm x 266.7mm)

Material: 2 Mil. White Adhesive Vinyl

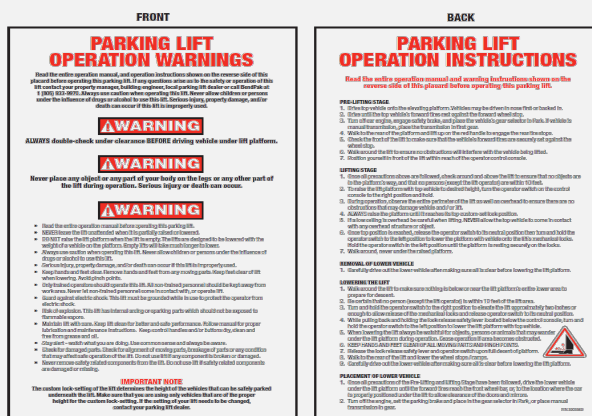
Ink: U.V. protected CMYK 4/C Process

Finish: Polished

Print Process: Offset Lithography - 200

line-screen or 300 p.p.i. for digital

Lamination: Clear-gloss over-laminate for abrasion, chemical, and ultra violet protection



2. Vendor Information (Or for Reference)

Approved Vendor	Vendor Part #	Contact #	Preferred Vendor
1)			
OR BENDPAK ENGINEERING APPROVED EQUIVALENT			

PART SPECIFICATION FORM

BENDPAK Number:	5905951
MRP Description:	2017_SERIAL_TAG-B-5905951-VERTICAL-NO BLEED
Date:	10/30/2017
ECO :	00857

1. Engineering Specification

Application:

DATA SERIAL TAG

Detailed Description:

SIZE: 3" L x 3" W (76.2mm x 76.2mm)



The data plate template includes the following fields and labels:

- BP BendPak** logo and contact information: Santa Paula, CA USA, www.bendpak.com
- MODEL NUMBER**
- DESCRIPTION**
- LIFT CAPACITY** and **DATE OF MFG.**
- VOLTAGE** section with checkboxes:
 - ☐ 110-240V, 50-60 Hz, 1 Ph
 - ☐ 208-240V, 50-60 Hz, 1 Ph
 - ☐ 380-415V, 50-60 Hz, 3 Ph
 - ☐ 208-440V, 50-60 Hz, 3 Ph
- SERIAL NUMBER**
- UPC**
- SAFETY WARNING:** DANGER! Disconnect Power Before Servicing
- WARRANTY VOID IF DATA PLATE IS REMOVED**
- IPN 5905951**
- EAC** certification mark

2. Vendor Information (Or for Reference)

Approved Vendor	Vendor Part #	Contact #	Preferred Vendor
1)			
2)			
OR BENDPAK ENGINEERING APPROVED EQUIVALENT			

PL-7000 Series Product Label Positioning

A

FRONT

PARKING LIFT OPERATION WARNINGS

Read the entire operation manual, and operation instructions shown on the reverse side of this placard before operating this parking lift. If any questions arise as to the safety or operation of this lift contact your property manager, building engineer, local parking lift dealer or call BendPak at 1 (805) 933-9970. Always use caution when operating this lift. Never allow children or persons under the influence of drugs or alcohol to use this lift. Serious injury, property damage, and/or death can occur if this lift is improperly used.



ALWAYS double-check under clearance BEFORE driving vehicle under lift platform.



Never place any object or any part of your body on the legs or any other part of the lift during operation. Serious injury or death can occur.



- Read the entire operation manual before operating this parking lift.
- NEVER leave the lift unattended when it is partially raised or lowered.
- DO NOT raise the lift platform when the lift is empty. The lifts are designed to be lowered with the weight of a vehicle on the platform. Empty lifts will take much longer to lower.
- Always use caution when operating this lift. Never allow children or persons under the influence of drugs or alcohol to use this lift.
- Serious injury, property damage, and/or death can occur if this lift is improperly used.
- Keep hands and feet clear. Remove hands and feet from any moving parts. Keep feet clear of lift when lowering. Avoid pinch points.
- Only trained operators should operate this lift. All non-trained personnel should be kept away from work area. Never let non-trained personnel come in contact with, or operate lift.
- Guard against electric shock. This lift must be grounded while in use to protect the operator from electric shock.
- Risk of explosion. This lift has internal arcing or sparking parts which should not be exposed to flammable vapors.
- Maintain lift with care. Keep lift clean for better and safe performance. Follow manual for proper lubrication and maintenance instructions. Keep control handles and/or buttons dry, clean and free from grease and oil.
- Stay alert - watch what you are doing. Use common sense and always be aware.
- Check for damaged parts. Check for alignment of moving parts, breakage of parts or any condition that may affect safe operation of the lift. Do not use lift if any component is broken or damaged.
- Never remove safety related components from the lift. Do not use lift if safety related components are damaged or missing.

IMPORTANT NOTE

The custom lock-setting of the lift determines the height of the vehicles that can be safely parked underneath the lift. Make sure that you are using only vehicles that are of the proper height for the custom lock-setting. If the setting of your lift needs to be changed, contact your parking lift dealer.

BACK

PARKING LIFT OPERATION INSTRUCTIONS

Read the entire operation manual and warning instructions shown on the reverse side of this placard before operating this parking lift.

PRE-LIFTING STAGE

1. Drive top vehicle onto the elevating platform. Vehicles may be driven in nose first or backed in.
2. Drive until the top vehicle's forward tires rest against the forward wheel stop.
3. Turn off car engine, engage safety brake, and place the vehicle's gear selector in Park. If vehicle is manual transmission, place the transmission in first gear.
4. Walk to the rear of the platform and lift up on the red handle to engage the rear tire stops.
5. Check the front of the lift to make sure that the vehicle's forward tires are securely set against the wheel stop.
6. Walk around the lift to ensure no obstructions will interfere with the vehicle being lifted.
7. Position yourself in front of the lift within reach of the operator control console.

LIFTING STAGE

1. Once all precautions above are followed, check around and above the lift to ensure that no objects are in the platform's way, and that no persons (except the lift operator) are within 10 feet.
2. To raise the lift platform with top vehicle to desired height, turn the operator switch on the control console to the right position and hold.
3. During operation, observe the entire perimeter of the lift as well as overhead to ensure there are no obstructions that may damage vehicle and / or lift.
4. ALWAYS raise the platform until it reaches its top custom-set lock position.
5. If a low ceiling is overhead be careful when lifting. NEVER allow the top vehicle to come in contact with any overhead structure or object.
6. Once top position is reached, release the operator switch to its neutral position then turn and hold the operator switch to the left position to lower the platform with vehicle onto the lift's mechanical locks. Hold the operator switch in the left position until the platform is resting securely on the locks.
7. Walk around, never under the raised platform.

REMOVAL OF LOWER VEHICLE

1. Carefully drive out the lower vehicle after making sure all is clear before lowering the lift platform.

LOWERING THE LIFT

1. Walk around the lift to make sure nothing is below or near the lift platform's entire lower area to prepare for descent.
2. Be certain that no person (except the lift operator) is within 10 feet of the lift area.
3. Turn and hold the operator switch to the right position to elevate the lift approximately two inches or enough to allow release of the mechanical locks and release operator switch to its neutral position.
4. While pulling back and holding the lock release safety lever located below the control console, turn and hold the operator switch to the left position to lower the lift platform with top vehicle.
5. When lowering the lift always be watchful for objects, persons or animals that may wander under the lift platform during operation. Cease operation if area becomes obstructed.
6. KEEP HANDS AND FEET CLEAR OF ALL MOVING PARTS AND PINCH POINTS.
7. Release the lock release safety lever and operator switch upon full descent of platform.
8. Walk to the rear of the lift and lower the wheel stops / ramps.
9. Carefully drive out the lower vehicle after making sure all is clear before lowering the lift platform.



PLACEMENT OF LOWER VEHICLE

1. Once all precautions of the Pre-Lifting and Lifting Stage have been followed, drive the lower vehicle under the lift platform until the forward tires reach the front wheel bar, or, to the location where the car is properly positioned under the lift to allow clearance of the doors and mirrors.
2. Turn off the engine, set the parking brake and place in the gear selector in Park, or place manual transmission in gear.

P/N 5905569

PL-7000XR_Safety_Placard.pdf

Trim: 6.5"W x 10.5"H

Material: 2 Mil. White Adhesive Vinyl

Ink: U.V. protected CMYK 4/C Process

Finish: Polished

Print Process: Offset Lithography - 200 line-screen or 300 p.p.i. for digital

Lamination: Clear-gloss over-laminate for abrasion, chemical, and ultra violet protection

THERMAL PLASTIC LAMINATED 5mil

NOTE: laminate should overlap print at least 4mm

PN 5905569

B



LABELWarning_Pinch_Points_Small-5905350.pdf:

Trim: 15" W x 1.5" H

Material: 2 Mil. White Adhesive Vinyl

Ink: U.V. protected CMYK 4/C Process

Finish: Polished

Print Process: Offset Lithography - 200 line-screen or 300 p.p.i. for digital

Lamination: Clear-gloss over-laminate for abrasion, chemical, and ultra violet protection

PN 5905350

PL-7000 Series Product Label Positioning

C



PL-7000XR_Deck_Warning_Label.pdf:

Trim: 5" W x 7" H

Material: 2 Mil. White Adhesive Vinyl

Ink: U.V. protected CMYK 4/C Process

Finish: Polished

Print Process: Offset Lithography - 200 line-screen or 300 p.p.i. for digital

Lamination: Clear-gloss over-laminate for abrasion, chemical, and ultra violet protection

D



BP Vertical Decal-2.75x23.75.pdf

Trim: 2.75"W x 23.75"H

Material: 2 Mil Clear Adhesive Vinyl

Ink: U.V. protected, Opaque White

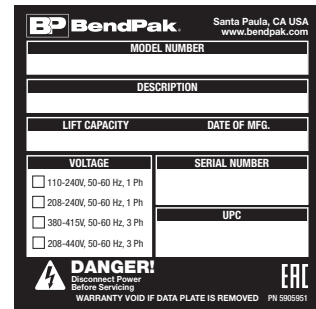
Finish: Polished

Print Process: Silk Screen, 85 line-screen (Yellow color in file represents what should be clear PET material and SHOULD NOT print as Yellow ink. White area in file represents Opaque White ink.)
Lamination: Clear-gloss over-laminate for abrasion, chemical, and ultra violet protection

PN 5905365

CLEAR ADHESIVE VINYL DOES NOT PRINT YELLOW

E



PN 5905951

Serial_Tag.pdf:

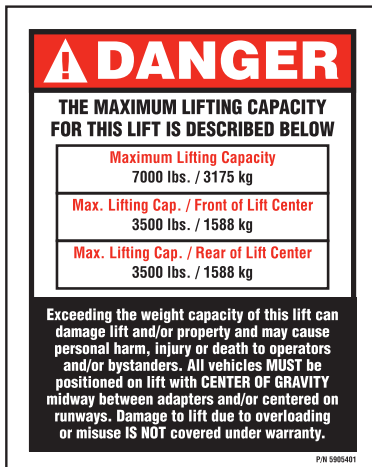
Use Zebra printer

Size: 3" W x 3" H

Material: 2 Mil. Gloss polyester thermal transfer label with a high performance permanent acrylic adhesive.

Ink: 1 Color-Black

F



Max. Cap. Danger 7K.pdf:

PN 5905401

Trim: 4" W x 5" H

Material: 2 Mil. White Adhesive Vinyl

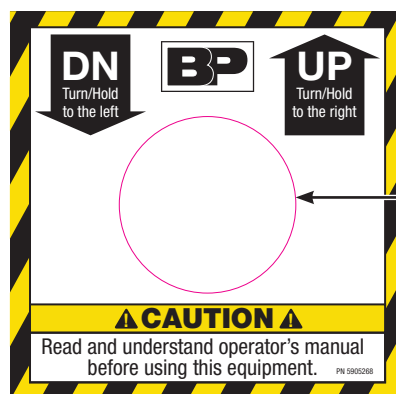
Ink: U.V. protected CMYK 4/C Process

Finish: Polished

Print Process: Offset Lithography - 200 line-screen or 300 p.p.i. for digital

Lamination: Clear-gloss over-laminate for abrasion, chemical, and ultra violet protection

G



Die-Cut Line, DOES NOT PRINT

PN 5905268

PL-7000XR_Control_Box_Label.pdf

Trim: 2.75" W x 2.75" H

Material: 2 Mil. White Adhesive Vinyl

Ink: U.V. protected CMYK 4/C Process

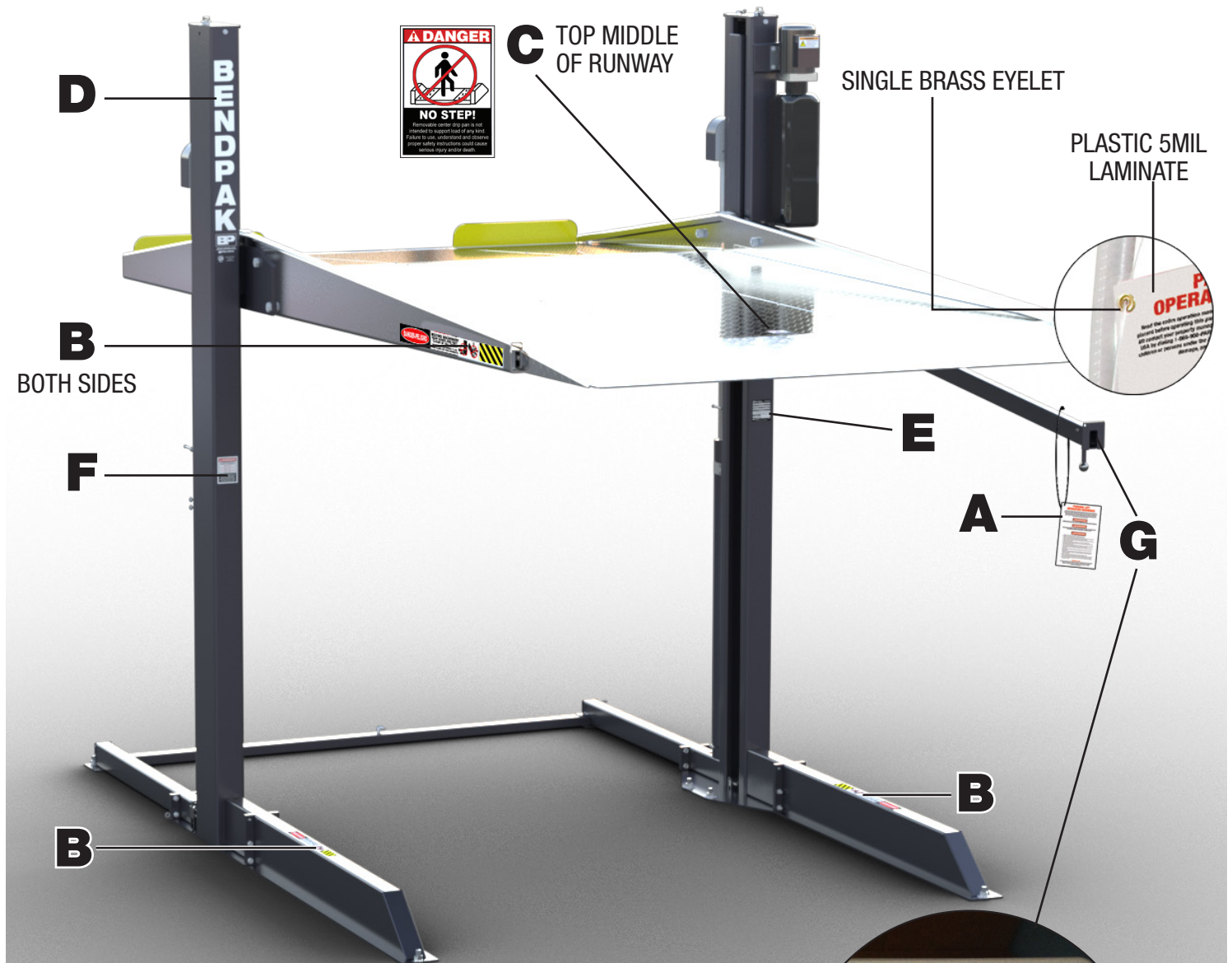
Finish: Polished

Print Process: Offset Lithography - 200 line-screen or 300 p.p.i. for digital

Lamination: Clear-gloss over-laminate for abrasion, chemical, and ultra violet protection

PN 5905268

PL-7000 Series Product Label Positioning



**OPEN/CLOSE PLATE SHOULD BE REMOVED.
Replace with LABEL "G"**